

---

# Configuring Actifio OnVault

AWS Edition

## Copyright, Trademarks, and other Legal Matter

Copyright © 2009 - 2018 Actifio, Inc. All rights reserved.

Actifio<sup>®</sup>, AnyIT<sup>®</sup>, Dedup Async<sup>®</sup>, OnVault<sup>®</sup>, Enterprise Data-as-a-Service<sup>®</sup>, FlashScan<sup>®</sup>, AppFlash DEVOPS Platform<sup>®</sup>, Copy Data Cloud<sup>®</sup>, and VDP<sup>®</sup> are registered trademarks of Actifio, Inc.

Actifio Sky<sup>™</sup>, Actifio One<sup>™</sup>, and Virtual Data Pipeline<sup>™</sup> are trademarks of Actifio, Inc.

All other brands, product names, goods and/or services mentioned herein are trademarks or property of their respective owners.

Actifio, Inc., is a provider of data protection and availability products. Actifio's technology is used in products sold by the company and products and services sold and offered by its commercial partners. The current list of Actifio patents is available online at: <http://www.actifio.com/patents/>

Actifio believes the information in this publication is accurate as of its publication date. Actifio reserves the right to make changes to information published in this document, including without limitation specifications and product descriptions, at any time and without notice. This document supersedes and replaces all information supplied prior to the publication hereof.

THE INFORMATION IN THIS PUBLICATION IS PROVIDED "AS IS." ACTIFIO, INC. MAKES NO REPRESENTATIONS OR WARRANTIES OF ANY KIND WITH RESPECT TO THE INFORMATION IN THIS PUBLICATION, AND SPECIFICALLY DISCLAIMS IMPLIED WARRANTIES OF MERCHANTABILITY OR FITNESS FOR A PARTICULAR PURPOSE.

This software and the associated documentation are proprietary and confidential to Actifio. Use, copying, and distribution of any Actifio software described in this publication requires an applicable software license. Any unauthorized use or reproduction of this software and the documentation may be subject to civil and/or criminal liability.

Actifio strives to produce quality documentation and welcomes your feedback. Please send comments and suggestions to [docs@actifio.com](mailto:docs@actifio.com).

# Contents

<b>Preface</b> .....	<b>v</b>
The ActifioNOW Customer Portal.....	v
Actifio Support Centers .....	v
<b>Chapter 1 - Introduction</b> .....	<b>1</b>
Audience .....	1
Actifio Pools.....	1
Incremental Forever Data Capture.....	2
Import OnVault Images.....	4
<b>Chapter 2 - Configuring Amazon AWS</b> .....	<b>5</b>
Create an AWS S3 Bucket .....	6
Create a New AWS User .....	9
Attach an AWS User to an AWS Policy .....	11
<b>Chapter 3 - Creating an Actifio OnVault Pool</b> .....	<b>13</b>
Before You Begin .....	13
Creating OnVault Pools.....	14
<b>Chapter 4 - Creating Resource Profiles</b> .....	<b>17</b>
Creating a Resource Profile Using AGM.....	17
Creating a Resource Profile From the Actifio Desktop .....	18
<b>Chapter 5 - Creating OnVault Policies</b> .....	<b>21</b>
Creating an OnVault Policy With AGM.....	22
AGM Snapshot to OnVault Policy.....	22
AGM Direct to OnVault Policy .....	24
Creating a Snapshot to OnVault Policy from the Actifio CDS/Sky Desktop.....	27
<b>Chapter 6 - Accessing and Importing Images</b> .....	<b>29</b>
Accessing Data in Actifio OnVault.....	29
Import OnVault Images .....	29
Importing Images From the AGM Domain Manager’s Storage Pool Page .....	30
Importing Images From the AGM Application Manager’s Application Page .....	30



---

# Preface

---

Your Actifio appliance's Documentation Library and AGM's Online help contain detailed, step-by-step, application-specific instructions on how to protect and access your data. The following guides will be of particular interest to users of Actifio CDS and Sky appliances:

- ***Configuring Resources and Settings With the Domain Manager***
- ***Planning and Developing Service Level Agreements***
- ***Virtualizing and Protecting Copy Data with the Application Manager***
- ***Accessing and Recovering Copy Data with the Application Manager***

## The ActifioNOW Customer Portal

During the configuration and initialization of your Actifio appliance your Actifio representative provided you with a user name and password for the ActifioNOW customer portal.

From the customer portal you can obtain detailed reports about your Actifio appliance as well as search the portal's knowledge base for answers to specific questions.

To log into the Actifio Now customer portal:

1. Go to: <https://now.actifio.com>
2. When prompted, enter the user name and password provided by your Actifio representative.

## Actifio Support Centers

To contact an Actifio support representative, you can:

- Send email to: [support@actifio.com](mailto:support@actifio.com)
- Call:

**From anywhere:** +1.315.261.7501

**US Toll-Free:** +1.855.392.6810

**Australia:** 0011 800-16165656

**Germany:** 00 800-16165656

**New Zealand:** 00 800-16165656

**UK:** 0 800-0155019



---

# 1 Introduction

---

## Audience

The intended audience for this document is an Actifio customer who has, and is familiar with object storage. The audience must also be familiar with and have a basic understanding of Actifio processes and procedures.

Object storage vendors provide detailed conceptual information and step-by-step instructions on the use of their object storage product.

Actifio provides conceptual information and detailed step-by-step instructions that can be found in:

- The AGM Online Help
- The Actifio CDS and Sky Desktop Library
- The customer portal in ActifioNOW.

For an overview of Actifio's basic concepts and procedures see ***Getting Started with Actifio Copy Data Management***.

## Actifio Pools

Actifio appliances retain data in pools:

- Actifio Snapshot Pools provide, local, short-term data retention i.e. a few days. Snapshot data ensures instant access to the latest production data. Snapshot pools also serve a source for OnVault policies.
- Actifio Dedup Pools provide local and remote, medium-term data retention i.e. three to six months. Dedup data is incrementally rehydrated before it is accessed.
- Actifio OnVault Pools define access to object stores. Data can be accessed directly from the object store without first copying it back to a local storage device.

---

**Note:** *OnVault can only be used on Actifio CDS systems capable of supporting 128TB dedup pools. Earlier generations of Actifio CDS hardware that were limited to 48TB or 64TB dedup pools cannot support OnVault.*

---

## Incremental Forever Data Capture

OnVault policies support Actifio's incremental forever data capture model, where the first time a policy runs, it captures an entire image, then subsequent data captures are only the changes to the image. This allows you to perform more frequent uploads (typically daily) to an object storage target.

Actifio OnVault with incremental forever data capture is a cost-effective solution that allows you to replace your off site vault infrastructure with on-demand object storage to store your daily, weekly, monthly, and yearly backup images.

VMware VMs can be captured directly from your production environment to an OnVault pool.

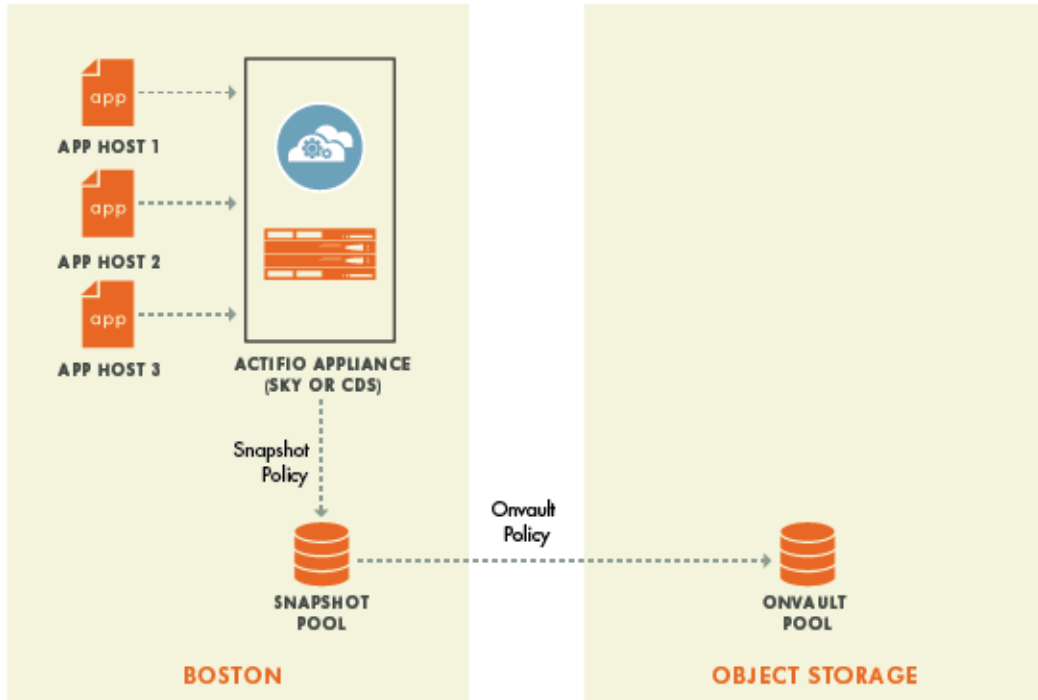
Any data type captured in an Actifio Snapshot Pool can be written to an Actifio OnVault pool. In addition, VMware VMs can be captured directly from your production environment to an OnVault pool.

For details on how to create the policies associated with these capture operations, see [Creating OnVault Policies](#) on page 21

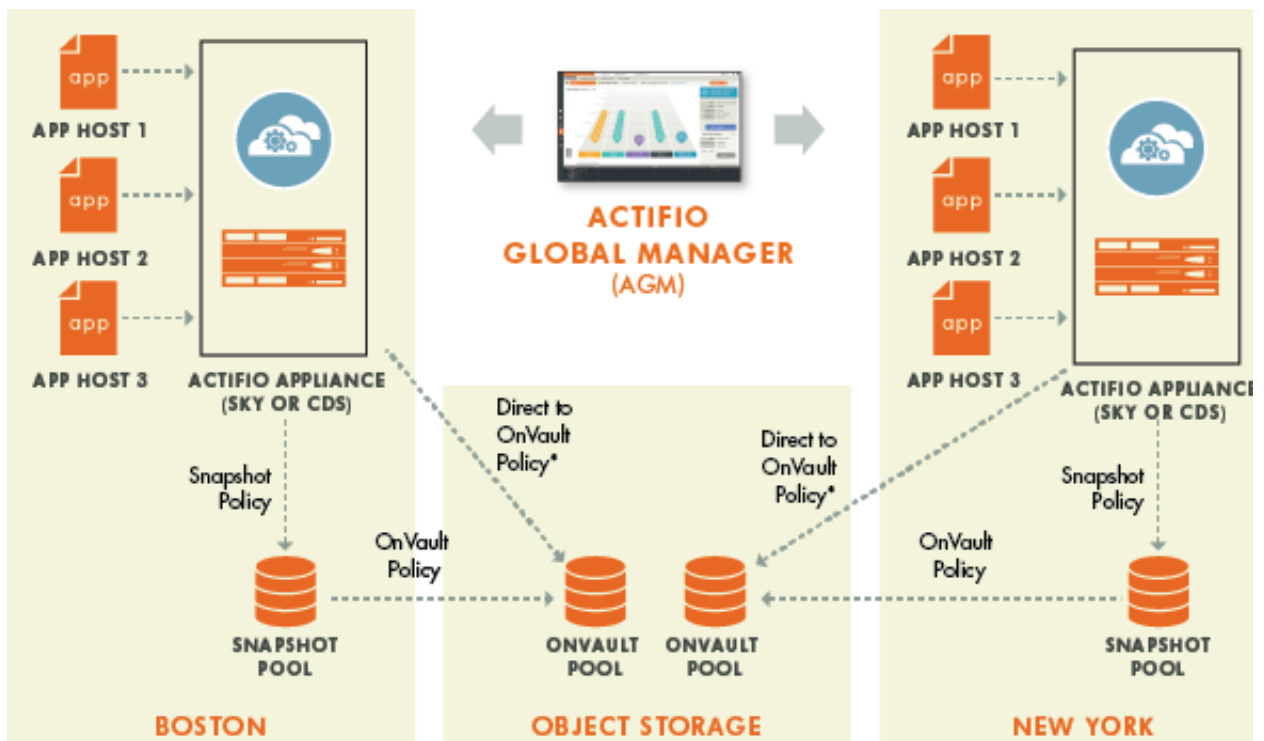
The following diagrams detail how Actifio OnVault fits within an environment with:

- A single Actifio appliance
- Multiple Actifio appliances managed by AGM





**OnVault in A Single-Actifio Appliance Environment**



**OnVault in A Multi-Actifio Appliance Environment - Managed by AGM**

## Import OnVault Images

AGM users can import OnVault images from one managed Actifio appliance to another.

An image that has been imported to another Actifio appliance, can be mounted to that appliance's application hosts.

This is especially useful in a disaster scenario where an Actifio appliance is no longer available. Data from the lost site can be mounted almost instantly to the other Actifio appliance's application hosts.

Ownership of an application's OnVault images can be taken by the Actifio appliance to which it was imported. Actifio appliances can only expire the OnVault images it owns. If a image is mistakenly imported, the AGM Forget option undoes the import operation.

---

## 2 Configuring Amazon AWS

---

This chapter provides a high-level overview of Amazon AWS processes and procedures needed to configure your Amazon AWS object storage account for use with an Actifio OnVault Storage Pool.

You must have a fully functional Amazon AWS account. From the Amazon AWS account you will need to:

- Create and record the name of an **S3 bucket**. You will need the name of the bucket when you create the Actifio OnVault. See [Create an AWS S3 Bucket](#) on page 6 for details.
- Create a new user dedicated to the S3 bucket used by the Actifio OnVault Pool and record the new user's **Access ID**, **Private Key**, and **Region**. You will need these when you create the Actifio OnVault. See [Create a New AWS User](#) on page 9 for details.
- Attach the new user to a policy that has full access to the S3 bucket you created for the Actifio OnVault. You can use the pre-define Amazon **AmazonS3FullAccess** or create a new one for the new user you created in this procedure. See [Attach an AWS User to an AWS Policy](#) on page 11.

---

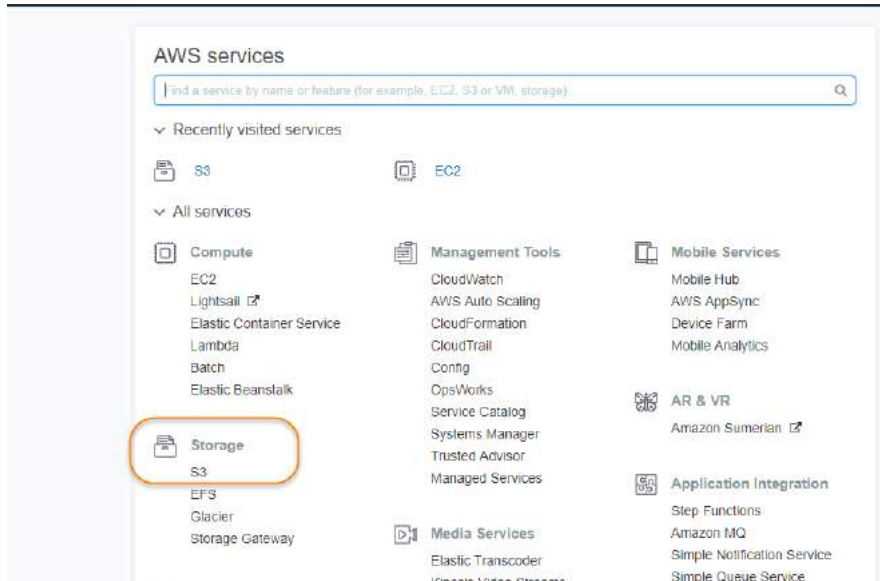
**Note:** *The Amazon AWS screen captures and Amazon AWS procedures in this document have been pulled directly from Amazon AWS. Updates to Amazon's user interface and procedures may occur before Actifio has had the opportunity to update this document. Consult the Amazon AWS documentation for the most up-to-date information.*

---

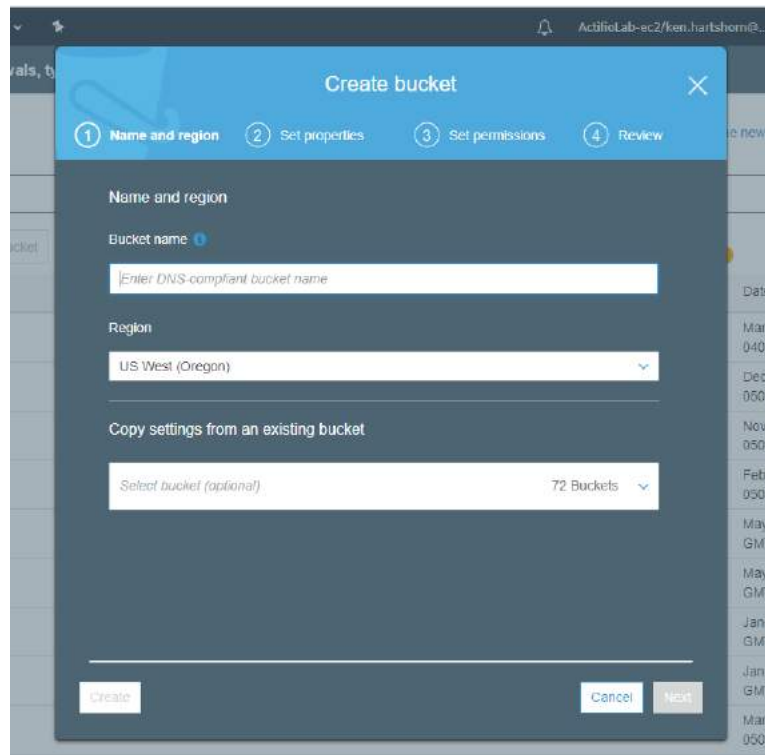
## Create an AWS S3 Bucket

To create an S3 bucket:

1. Log in to the Amazon account, and from the **Amazon Web Services** menu, under the **Storage and Content** section, select **S3**:

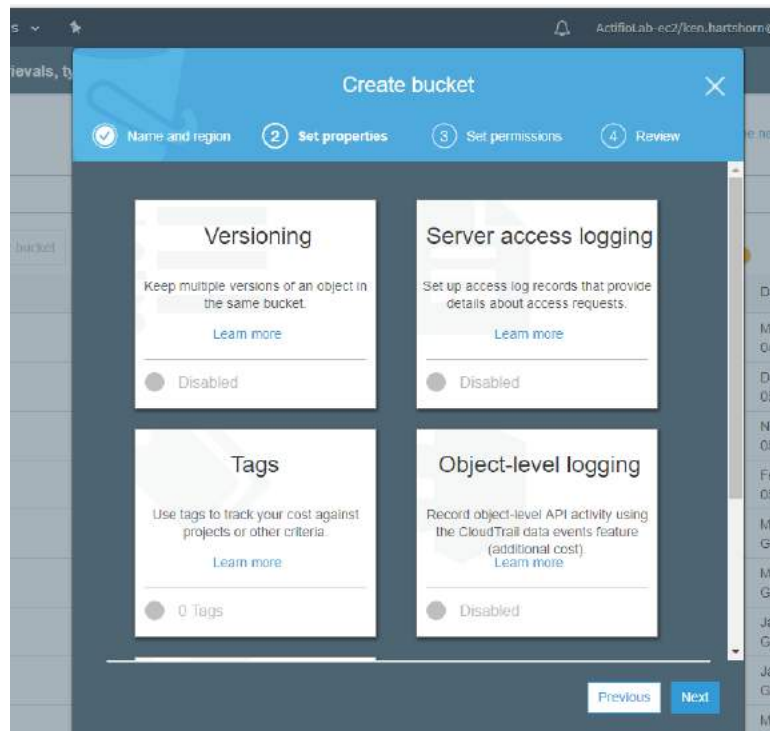


2. From the S3 page, Click **Create Bucket** and the **Create a Bucket** dialog box is displayed:

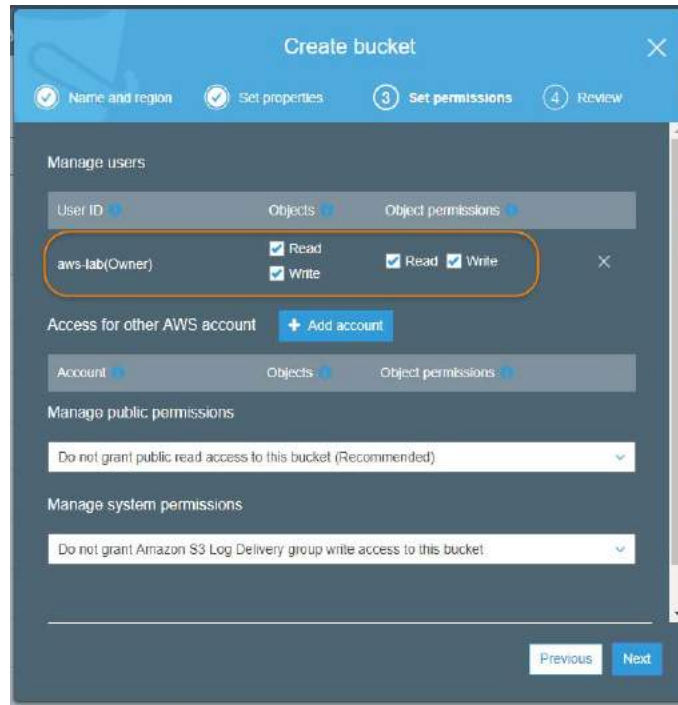


3. In the spaces provided:
  - o Enter a name for the bucket. You will need the name of this bucket when you create the Actifio OnVault Pool.

- o Select a region in which the bucket will reside.
  - o Optionally you can import settings from another bucket.
4. Click **Next**, and the Set Properties options are displayed.



5. Set properties as needed.
6. Click **Next** and the Set Permissions options are displayed:

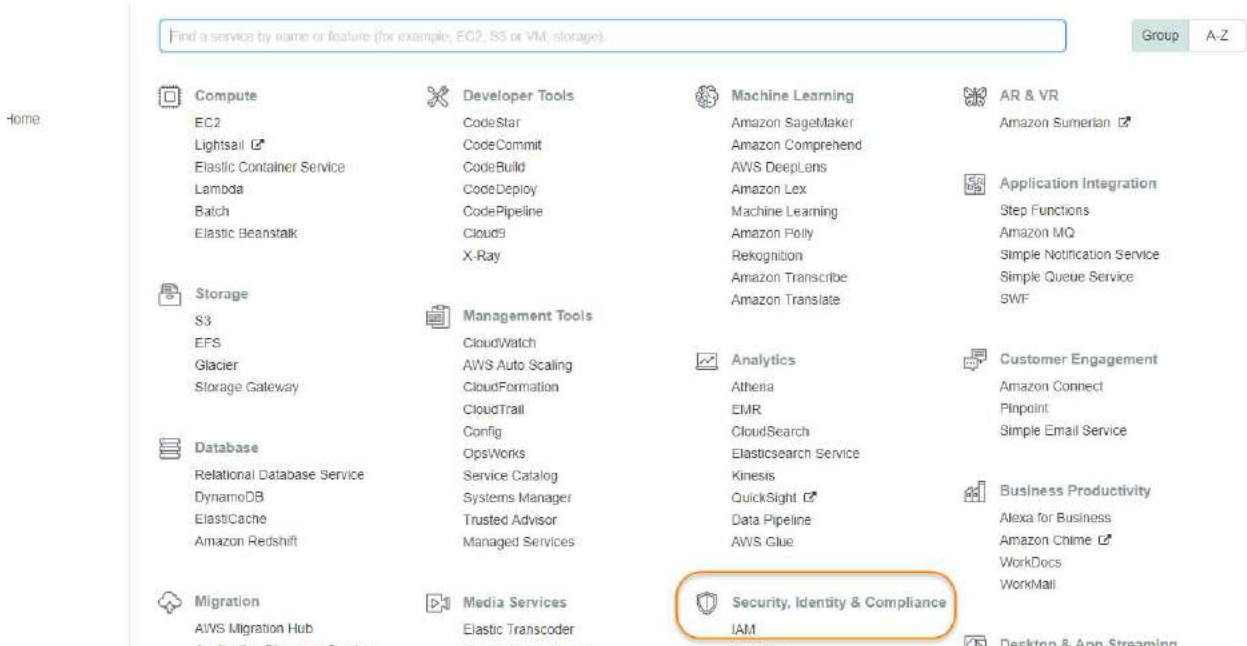


7. Ensure the account owner has both read/write access to both Objects and Cloud permissions.
8. Make other settings as needed. In most cases, the default settings will meet your needs.

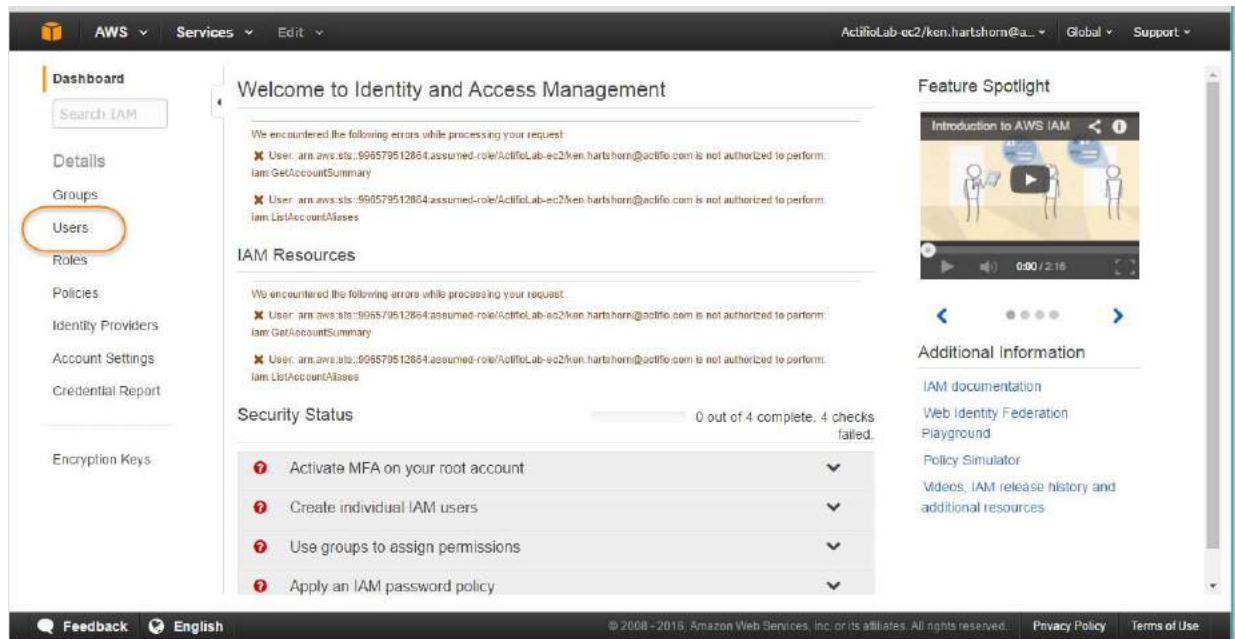
## Create a New AWS User

To create a New User:

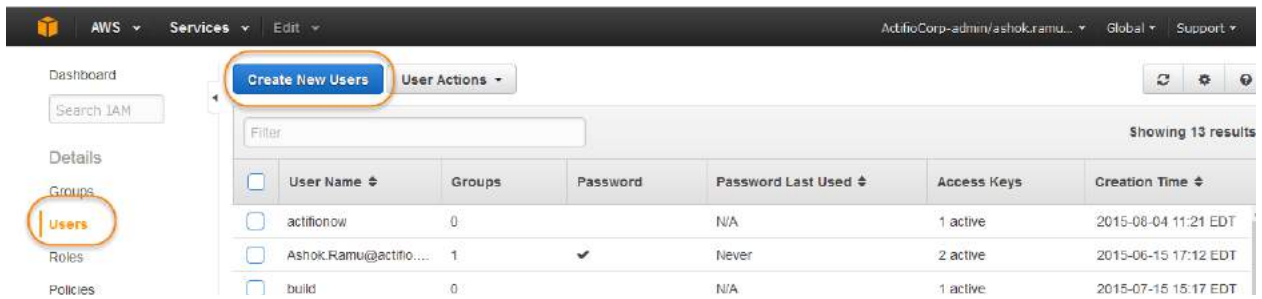
1. Log in to the Amazon account, and from the **Amazon Web Services** menu, under the **Security, Identity, and Compliance** section, select **IAM**:



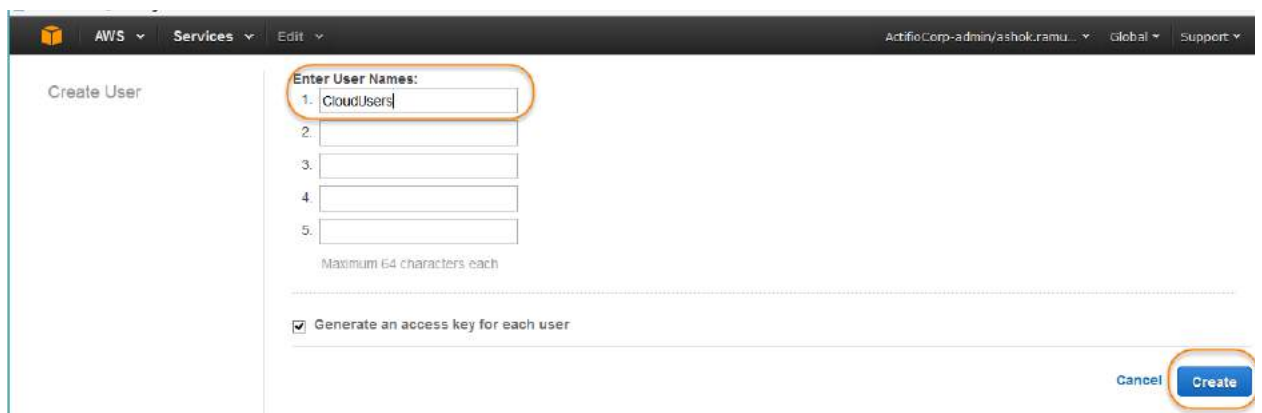
2. From the left-hand navigation menu of the **Welcome to the Identity and Access Management** page, select **Users**:



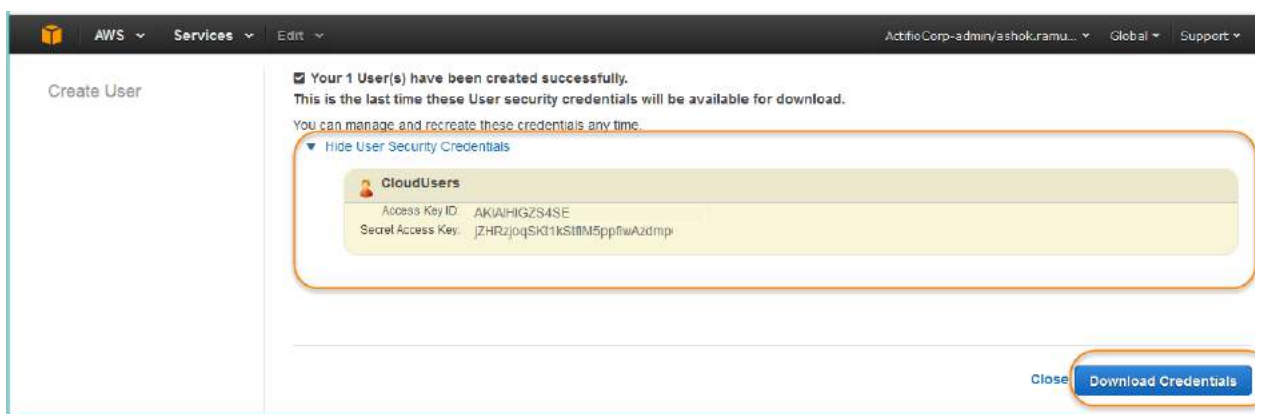
- From the Users page, click **Create New Users**:



- In the space provided, enter a name for the new user:



- Select (check) **Generate an access key for each user**.
- Click **Create** and the user is created:



- To create the Actifio OnVault Pool you will need the user's Access Key ID and Secret Access Key generated for the user by either:
  - Clicking the **Show Security Credentials** link and manually record the ID and Key.
  - Clicking **Download Credentials** and downloading a copy of the ID and Key to your desktop.



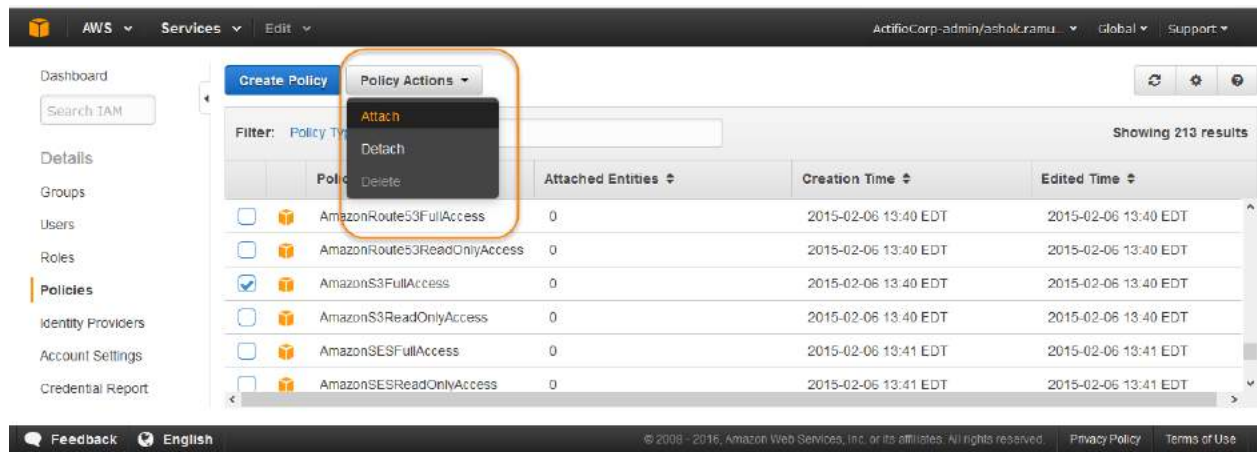
## Attach an AWS User to an AWS Policy

To attach a user to a policy:

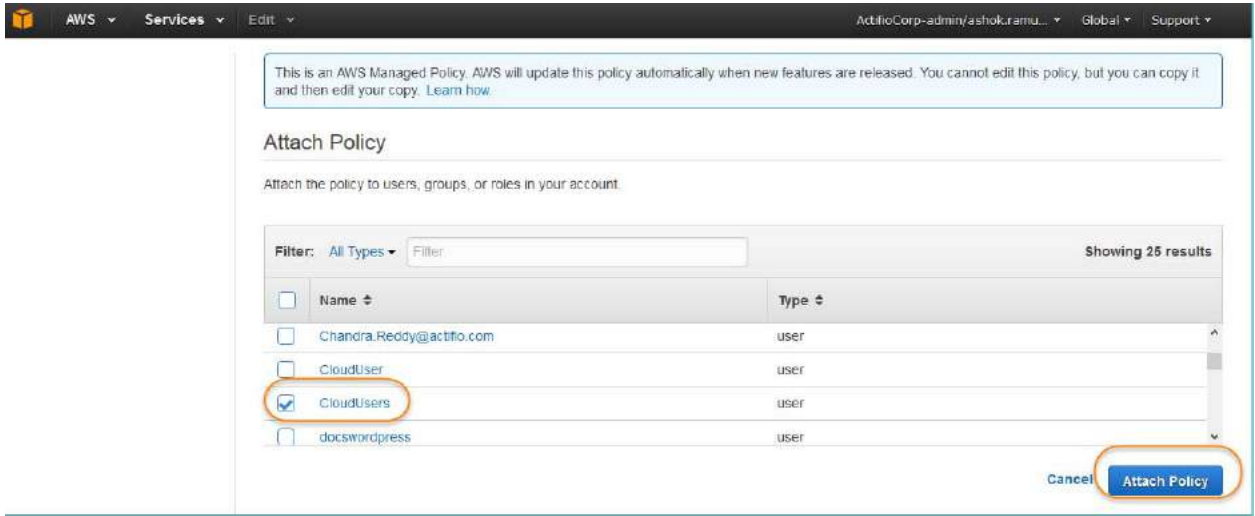
1. Log in to the Amazon account, and from the **Amazon Web Services** menu, under the **Security and Identity** section, select **Identity and Access management**:
2. Select **Policies**, from the left-hand navigation menu of the **Welcome to the Identity and Access Management** page:



3. From the displayed list of policies, select (check) **AmazonS3FullAccess**.



4. Click the **Policy Action** tab and from the drop down menu, select **Attach** and the **Attach Policy** page is displayed:



5. From the list of users displayed, select (check) the user you created for the Actifio OnVault Pool.
6. Click **Attach Policy** and the policy is attached to the select user.

---

# 3 Creating an Actifio OnVault Pool

---

This chapter assumes that the reader has an existing AWS account and is familiar with AWS practices and procedures. AWS provides detailed, step-by-step instructions on the use of AWS. In addition, the reader must be familiar with Actifio's basic processes and procedures.

## Before You Begin

Before you begin, you must have a fully functional Amazon AWS account. From your AWS account you will need to:

- Create and record the name of an **S3 bucket**. You will need the name of the bucket when you create the Actifio OnVault.
- Create a new user dedicated to the S3 bucket used by the Actifio OnVault Pool and record the new user's **Access ID**, **Private Key**, and **Region**. You will need these when you create the Actifio OnVault.
- Attach the new user to a policy that has full access to the S3 bucket you created for the Actifio OnVault. You can use the pre-define Amazon **AmazonS3FullAccess** or create a new one for the new user you created in this procedure.

---

**Note:** *The Amazon AWS terminology in this document has been pulled directly from AWS. Updates to Amazon's user interface and procedures may occur before Actifio has had the opportunity to update this document. Consult the Amazon AWS documentation for the most up-to-date information.*

---

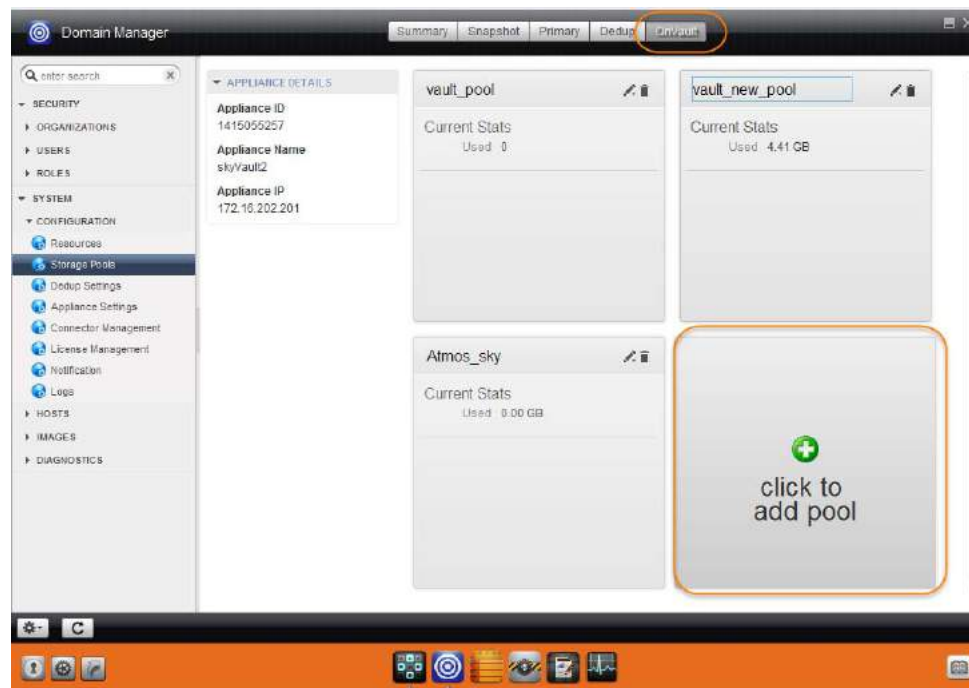
## Creating OnVault Pools

OnVault Pools define access to an object store. OnVault Pools are created from an Actifio CDS or Actifio Sky appliance. The Actifio appliance from which the OnVault Pool was created or the AGM that manages that appliance (if applicable), can use the pool to create a Resource Profile.

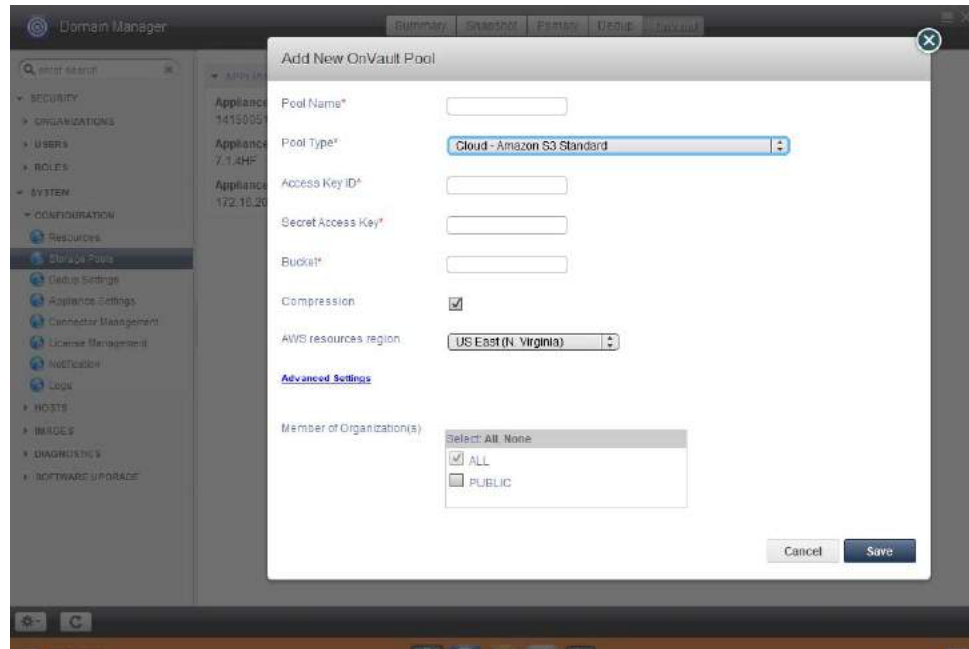
The best practices for customers using AGM is to use the same object store for all OnVault Pools. This includes having the same access credentials. Doing so makes the import operation and disaster recovery operations seamless.

To create an OnVault Pool:

1. From an Actifio CDS or Actifio Sky appliance, open the **Domain Manager** to **System > Configuration > Storage Pools**.
2. Select the **OnVault** tab and the OnVault Pools page opens:



3. Click **Click to add pool** and a dialog box opens that will allow you to select Amazon S3 Storage.
4. Select **Cloud - Amazon S3 Standard** or **Cloud Amazon S3 Standard** and the OnVault Pool options for Amazon S3 Storage are displayed:



---

**Note:** Actifio Storage Pools can be used with Amazon's S3 Standard Storage and Standard Infrequent Access Storage. Glacier Storage is not supported.

---

5. In the spaces provided enter:
  - o A name for the OnVault pool.
  - o The Access ID for the user you created.
  - o The Access Key for the user you created.
  - o The name of the bucket name you created.
6. In most cases you will want to keep the compression checked. Compression will keep network traffic to a minimum.
7. Select the region associated with the Actifio OnVault Pool's S3 bucket.
8. **Advanced Settings** should only be changed from the default block size at the direction of Actifio Support.
9. Select the organization memberships for the Actifio OnVault Pool as needed.
10. Click **Save** and the OnVault Pool is created and can be added to a Resource Profile.



# 4 Creating Resource Profiles

Resource Profiles define which Actifio pools will be used to retain application data. Resource profiles can be created from AGM or Actifio CDS and Sky appliances.

**Note:** The best practice for customers using AGM is to create Resource Profiles from AGM.

## Creating a Resource Profile Using AGM

Resource Profiles are created in the Actifio Service Level Architect (SLA) service. To create a Resource Profile from AGM:

1. From the SLA Architect select the Profiles tab at the top of the page.
2. Either select and edit existing Resource Profile or click Create Profile to create a new profile and the Resource Profile page is displayed.

**Caution!** If you select an existing Resource Profile, ALL applications to which the profile is applied will be impacted by changes to the profile.

The screenshot shows the 'Create New Profile' interface in the SLA ARCHITECT application. The page title is 'SLA ARCHITECT' and the current view is 'Profiles'. The form contains the following fields:

- PROFILE\*:** ProfileWithOnVaultPool
- DESCRIPTION:** This profile uses an OnVault Pool
- Primary Appliance:** Sky Source
- Snapshot Pool:** act\_per\_poc1000
- OnVault Pool:** OnVaultPool
- Remote Appliance:** None

A 'Save Profile' button is located to the right of the description field.

3. In the spaces provided, enter a name and description for the profile.
4. Select the Primary Appliance from the drop-down list. This is the appliance on which the profile was or will be created.

- From the Snapshot Pool drop-down menu select the Snapshot Pool that the OnVault Pool will use as its source.
- From the **OnVault Pool** drop down menu, select the Actifio OnVault Pool to which production data in the Snapshot Pool will be sent. You can select this option only if the selected Actifio appliance has defined an OnVault Storage Pool.
- If this Profile will be used in an SLA Template that contains policies that will replicated data to another Actifio appliance, then from the drop down list under Remote Appliance, select the Actifio appliance to which data will be replicated. The remote Actifio appliance selected is not used with OnVault.
- Click **Save Profile**.

## Creating a Resource Profile From the Actifio Desktop

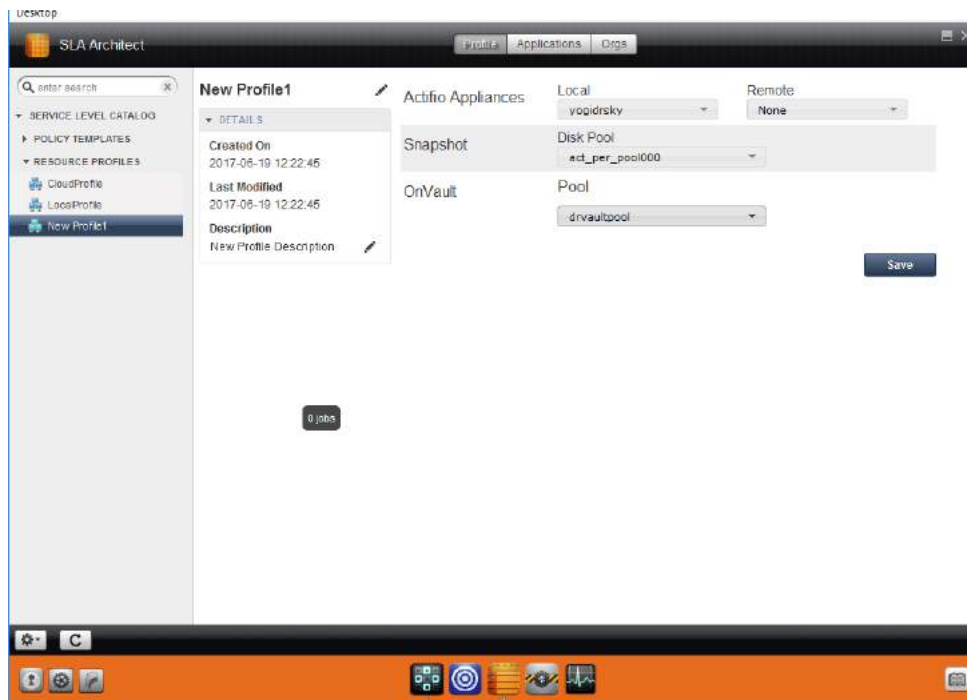
Resource Profiles are created in the Actifio Service Level Architect (SLA) service. To create a resource profile from the Actifio Desktop:

- From the SLA Architect select either an existing Resource Profile or from the SLA Architect's service menu, click **New Profile...** and the Resource Profile page is displayed.

---

**Caution!** If you select an existing Resource Profile, ALL applications to which the profile is applied will be impacted by changes to the profile.

---



- Select the local Actifio appliance from **Local** drop-down list. This is the appliance on which the profile is created.
- Ensure a Snapshot Pool from the **Disk Pool** drop-down list is selected. Data written to this pool is the source data for the OnVault Pool.
- From the **OnVault Pool** drop down menu, select the Actifio OnVault Pool to which production data in the Snapshot Pool will be sent. You can select this option only if this Actifio appliance has defined an OnVault Storage Pool.



5. If this Profile will be used in an SLA Template that contains policies that will replicated data to another Actifio appliance, then from the drop down list under Remote Appliance, select the Actifio appliance to which data will be replicated. The remote Actifio appliance selected is not used with OnVault.
6. Click **Save**.



---

# 5 Creating OnVault Policies

---

An OnVault policy defines when data is captured, the frequency it will be captured, and how long it will be retained. OnVault Policies can be created from AGM, Actifio CDS appliances, or Actifio Sky appliances.

---

**Note:** *The best practice for customers using AGM is to create or update templates on AGM and then push them to managed Actifio appliances.*

---

Actifio allows you to create a two types of OnVault policies:

- AGM and Actifio Desktop users can create Snapshot to OnVault policies that allow them to capture data in an Actifio Snapshot Pool and further protect that data in an Actifio OnVault Pool.
- AGM users can create Direct to OnVault policies that allow them to capture VMs in their production environment and protect them directly to an Actifio OnVault Pool.

---

**Caution!** *If you add an OnVault Policy to an existing SLA Policy Template, **ALL applications** to which the SLA Policy Template is applied will be impacted by the changes.*

---

## Creating an OnVault Policy With AGM

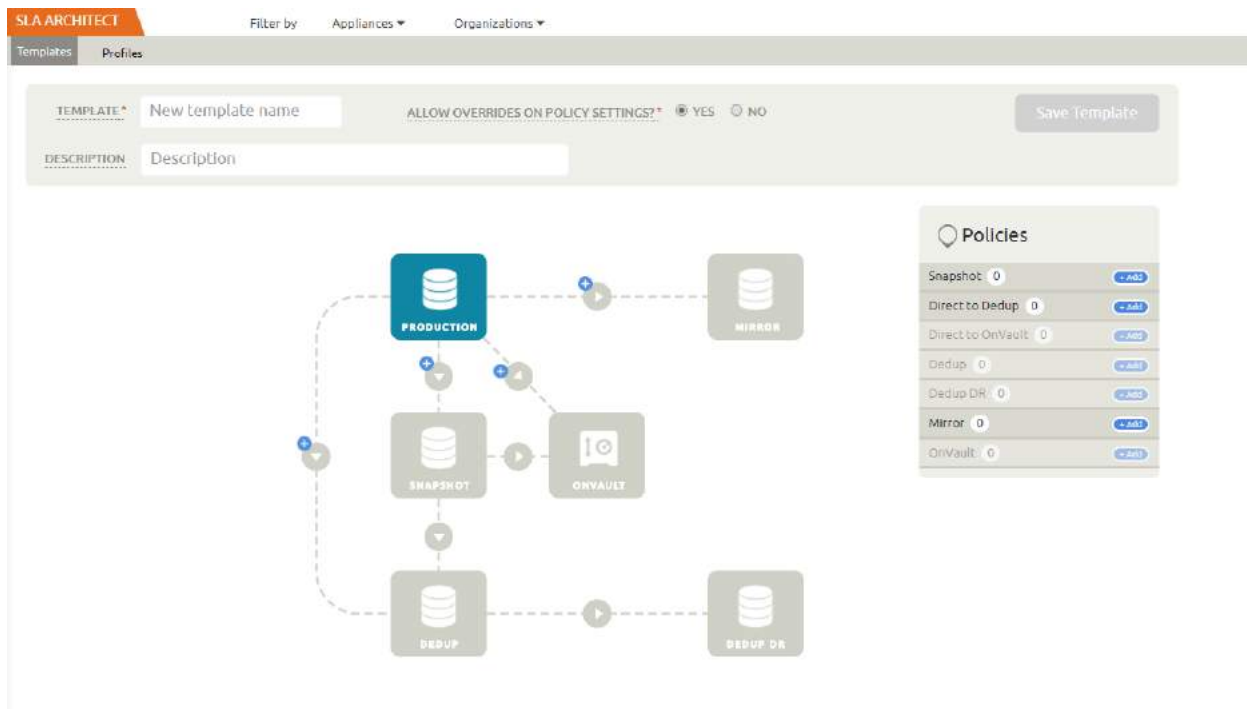
**Note:** Best practices for creating SLA Policy Templates and Policies can be found in the AGM Online Help.

An Actifio OnVault policy can be created in an existing SLA Template that has a Production to Snapshot policy, or created as part of a new SLA Template.

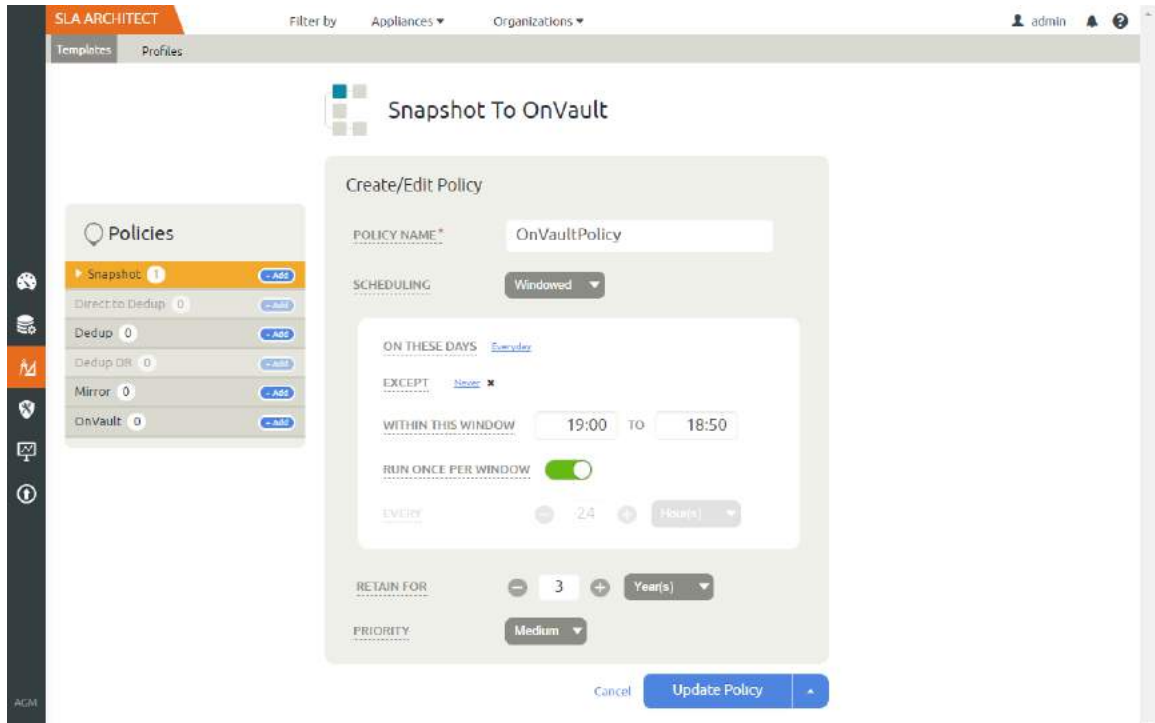
### AGM Snapshot to OnVault Policy

SLA Policy Templates are defined in the Actifio SLA Architect service. Before you can create an Actifio OnVault policy, you must use an existing SLA Template that has a Production to Snapshot policy, or create a new SLA Template with a Production to Snapshot policy. Images captured by Production to Snapshot policies are used as the source for OnVault policies.

To create a Snapshot to OnVault Policy from AGM:



1. From an existing SLA Template or a new SLA Template with a Production to Snapshot policy, click the plus sign + between Snapshot and OnVault and the Snap to OnVault page is displayed:



2. Set the policy according to your needs. For example, an OnVault policy could be defined as:
  - o Within a window
  - o Run **Everyday**
  - o Between 19:00 to 18:50
  - o Once per window
  - o Retain for **3 Years**
3. Click **Update Policy** and the policy is created.

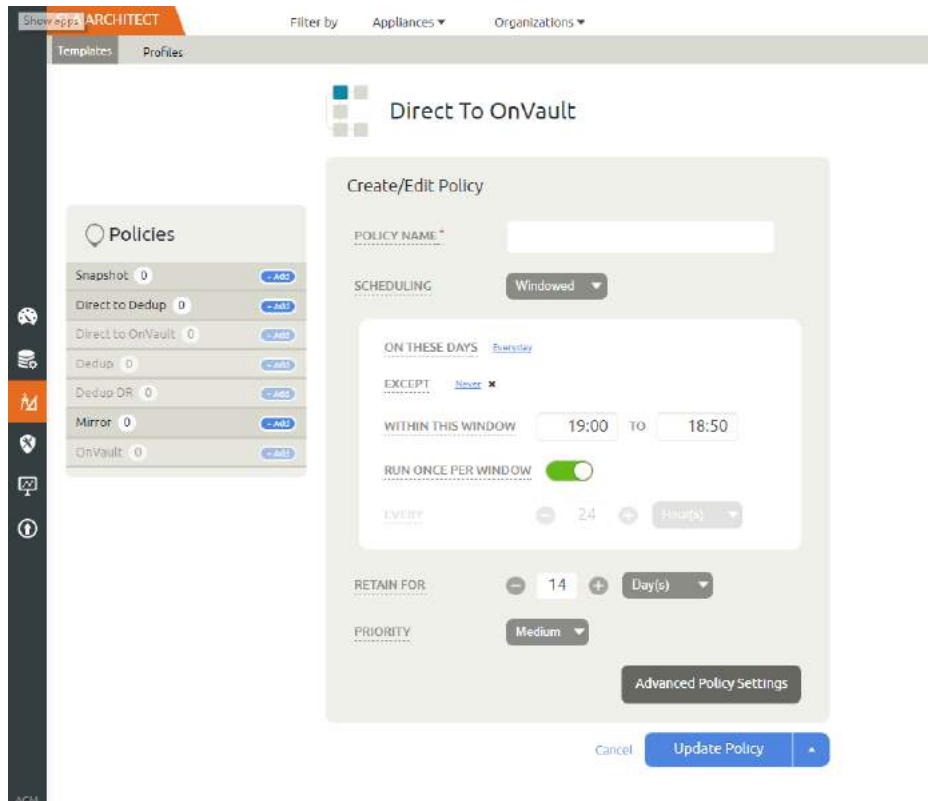
## AGM Direct to OnVault Policy

Direct to OnVault policies are used to capture VMware VMs and can only be created in AGM.

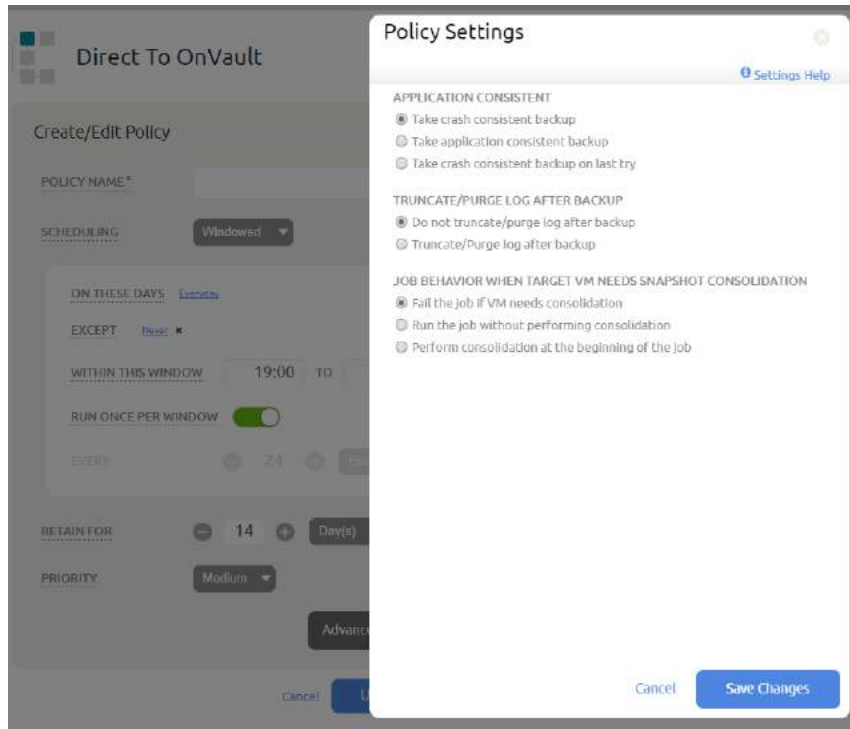
To create an Actifio Snapshot to OnVault Policy from AGM:

The screenshot shows the 'SLA ARCHITECT' interface. At the top, there are filters for 'Appliances' and 'Organizations'. Below that, there are input fields for 'TEMPLATE\*' (with 'New template name' entered), 'ALLOW OVERRIDES ON POLICY SETTINGS?' (with 'YES' selected), and 'DESCRIPTION' (with 'Description' entered). A 'Save Template' button is on the right. The main area contains a diagram with several nodes: 'PRODUCTION' (highlighted in blue), 'MIRROR', 'SNAPSHOT', 'ONVAULT', 'DEDUP', and 'DEDUP DR'. Dashed lines with arrows connect these nodes, and a plus sign (+) is visible between 'PRODUCTION' and 'ONVAULT'. On the right side, there is a 'Policies' list with the following items: Snapshot (0), Direct to Dedup (0), Direct to OnVault (0), Dedup (0), Dedup DR (0), Mirror (0), and OnVault (0). Each item has a '+ Add' button next to it.

1. From an existing SLA Template or a new SLA Template with a Production to Snapshot policy, click the plus sign + between Production and OnVault and the Direct to OnVault page is displayed:



2. Set the policy according to your needs. For example, an OnVault policy could be defined as:
  - o Within a window
  - o Run **Everyday**
  - o Between 19:00 to 18:50
  - o Once per window
  - o Retain for **3 Years**
3. Click **Advanced Policy Settings** and the Policy Settings dialog box is displayed. This dialog box allows you to set VM specific advanced policy settings:



4. From the Policy settings dialog box select:

- **Application Consistent:**

**Take crash consistent backup:** Crash-consistent backup is a fast backup of application data in storage as if power were lost at that moment. It does not pause application data I/O. All data on disk are saved, and data in memory is lost. Incomplete transactions may be saved. The recovery of a crash consistent backup may take longer time and introduce exceptions. Typically recovery from crash has to be made manually. Crash consistent backups are easy and fast for virtual machines.

**Take application consistent backup:** Application-consistent backup notifies the application to prepare for a backup. This option loses no data. It pauses application data I/O, completes in-flight transactions, and flushes memory to disk. On recovery, data is easily accessible. For virtual clients, usually an agent is needed to get notification of a backup at host, and then notify applications, and may need to wait for an approval from applications. Not all applications support application-consistent backups.

**Take crash consistent backup on last try:** This option initially takes application consistent backups, but if an application consistent backup fails for any reason, it will then take a crash consistent backup.

- **Truncate/Purge Log After Backup:**

Select whether to truncate the logs after every backup. When this is selected, application-related logs are truncated up to the most recent backup.

- **Job Behavior When Target VM Needs Snapshot Consolidation:**

**Fail the job:** Fails the job.

**Run the job without performing consolidation:** All jobs run normally even if consolidation is pending.

**Perform consolidation at the beginning of the job:** Backup jobs try to perform consolidation at the beginning of the job. If consolidation fails, the job fails.

5. Click **Save Changes** or **Cancel** and the dialog box closes.

6. Click **Update Policy** and the policy is created.

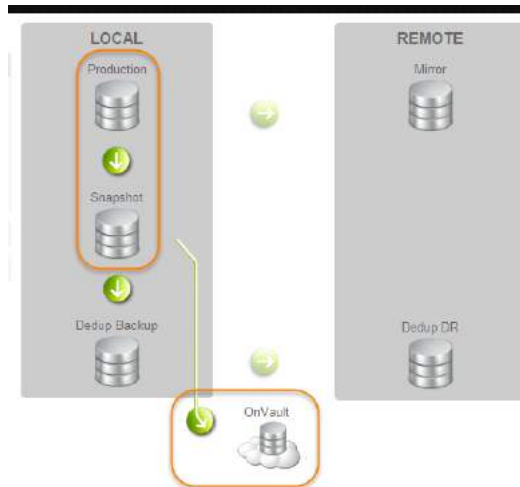


## Creating a Snapshot to OnVault Policy from the Actifio CDS/Sky Desktop

**Note:** Best practices for creating SLA Policy Templates and Policies can be found in the **Developing Service Level Agreements** guide.

SLA Policy Templates are defined in the Actifio SLA Architect service. Before you can create an OnVault policy, you must use an existing SLA Template that has a Production to Snapshot policy, or create a new SLA Template with a Production to Snapshot policy. Images captured by Production to Snapshot policies are used by OnVault policies.

To create an OnVault Policy from an Actifio CDS or Actifio Sky appliance:



1. From an existing SLA Template or a new SLA Template with a Production to Snapshot policy, click the green arrow between Snapshot and OnVault and the Snap to OnVault dialog box is displayed:



2. Set the policy according to your needs. For example, an OnVault policy could be defined as:
  - o Within a window
  - o Run **Everyday**
  - o Between 19:00 to 18:50
  - o Once per window
  - o Retain for **3 Years**
3. Click **Save** and the policy is created.



---

# 6 Accessing and Importing Images

---

Once you have a Resource Profile that uses an OnVault Pool and an SLA Policy Template that contains an OnVault Policy, you can, from the Actifio Application Manager, apply the Resource Profile and SLA Policy Template to applications and VMs. The OnVault policy will run according to its schedule and the captured image will be written to the OnVault Pool specified in the Resource Profile.

## Accessing Data in Actifio OnVault

Once you have a Resource Profile that uses an OnVault Pool and an SLA Policy Template that contains an OnVault Policy, you can, from the Actifio Application Manager, apply the Resource Profile and SLA Policy Template to applications and VMs. The OnVault policy will run according to its schedule and the captured image will be written to the OnVault Pool specified in the Resource Profile.

After the first capture operation has completed, data in an Actifio OnVault Pool's object storage location can be accessed according to the following rules:

- Actifio CDS and Sky appliances can create clones from OnVault data.
- Actifio CDS and Sky appliances cannot create LiveClones from OnVault data.
- Actifio Sky appliances can mount OnVault data.
- Actifio CDS appliances can mount data in an OnVault Pool, however, it will copy all data to the snapshot pool first, then do the mount.
- Actifio CDS and Actifio Sky appliances can perform Application Aware mounts of data in an OnVault Pool.

For details on how to access data captured by AGM, see the AGM online help. For details on how to access data captured by an Actifio appliance, see ***Accessing and Recovering Copy Data with the Application Manager***.

## Import OnVault Images

AGM's user interface supports the import of OnVault images between managed Actifio appliances. Images cannot be imported from an Actifio CDS and Actifio Sky appliance's desktop interface.

When an image is imported to an Actifio appliance, that Actifio appliance can instantly mount the imported data to its managed hosts.

Ownership of imported data is maintained by the source appliance. The Import function allows ownership to be transferred to the appliance to which the data is imported. Ownership gives full control over the image, including the ability to expire the image.

In case an image is accidentally imported, AGM provides a Forget Imported Image function that will remove an imported image from an Actifio appliance.

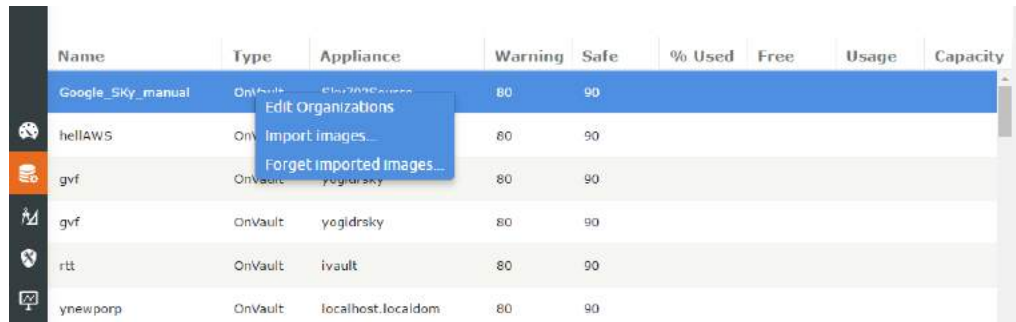
Images can be imported from the AGM Domain Manager's Storage Pool page and the AGM Application Manager's Applications page.

To facilitate importing images, when defining a OnVault Pool for an Actifio CDS or Sky appliance, use the same object store and object store credentials.

## Importing Images From the AGM Domain Manager's Storage Pool Page

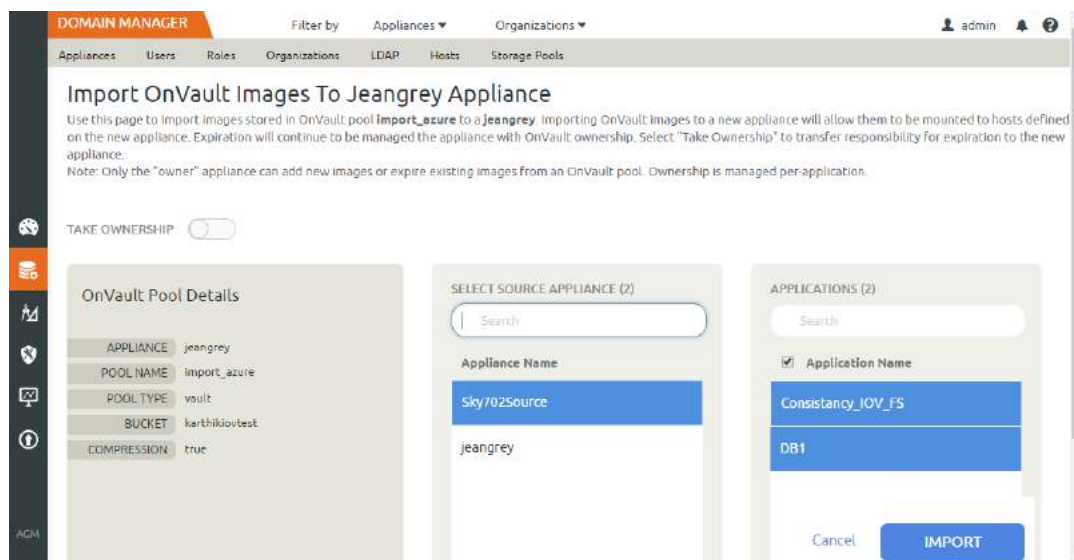
Importing images from the Domain Manager's Storage Pool page has the advantage of allowing you to select multiple application images.

To import images from the Domain Manager's Storage Pool page:



Name	Type	Appliance	Warning	Safe	% Used	Free	Usage	Capacity
Google_SKy_manual	OnVault	sky702Source	80	90				
hellAWS	OnVault	jeangrey	80	90				
gvf	OnVault	yogidrsky	80	90				
gvf	OnVault	yogidrsky	80	90				
rtt	OnVault	ivault	80	90				
ynewporp	OnVault	localhost.localdom	80	90				

1. Right click on an OnVault Storage Pool and from the drop down menu select **Import Images..** and the Import OnVault Images page is displayed:



**DOMAIN MANAGER** Filter by Appliances Organizations

Appliances Users Roles Organizations LDAP Hosts Storage Pools

### Import OnVault Images To Jeangrey Appliance

Use this page to import images stored in OnVault pool **import\_azure** to a **jeangrey** appliance. Importing OnVault images to a new appliance will allow them to be mounted to hosts defined on the new appliance. Expiration will continue to be managed the appliance with OnVault ownership. Select "Take Ownership" to transfer responsibility for expiration to the new appliance.  
Note: Only the "owner" appliance can add new images or expire existing images from an OnVault pool. Ownership is managed per-application.

TAKE OWNERSHIP

**OnVault Pool Details**

APPLIANCE	jeangrey
POOL NAME	import_azure
POOL TYPE	vault
BUCKET	karthikoutest
COMPRESSION	true

**SELECT SOURCE APPLIANCE (2)**

Search

Appliance Name

Sky702Source

jeangrey

**APPLICATIONS (2)**

Search

Application Name

Consistency\_IOV\_FS

DB1

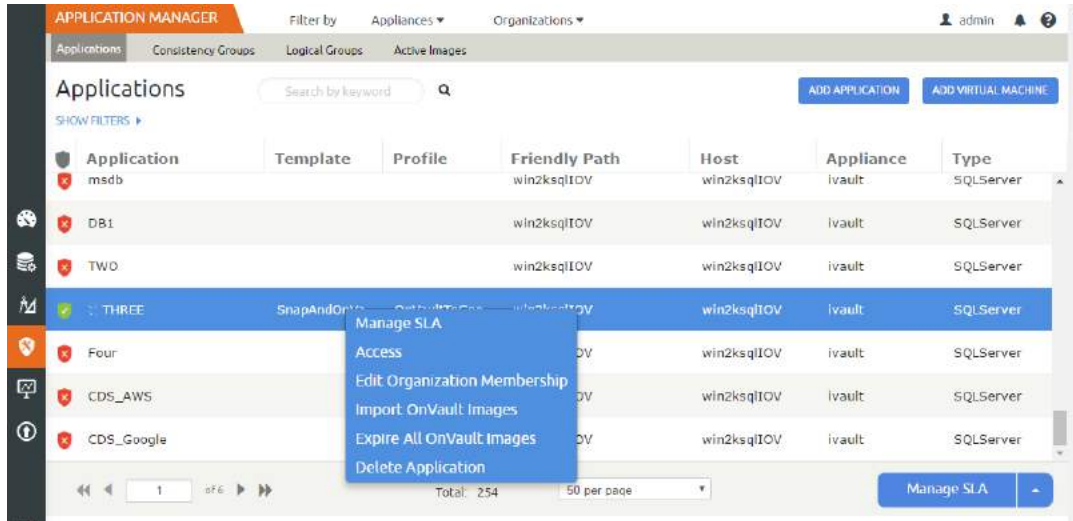
Cancel **IMPORT**

2. Select the Actifio appliance to which the application(s) will be imported.
3. Select the application(s) to import.
4. Click **Import** and the import operation will begin. A message will be displayed when the operation completes.

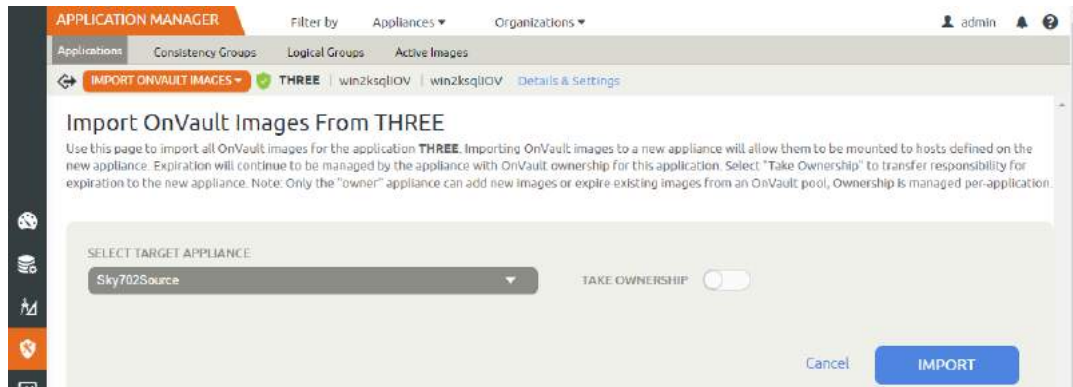
## Importing Images From the AGM Application Manager's Application Page

Importing images from the Application Manager's Application page has the advantage of allowing you to quickly select a single, specific application image to be imported.

To import images from the Application Manager' Application page:



1. Right click on an application that is protected in an OnVault Pool
2. From the drop down menu select Import OnVault Images and the Import OnVault Images page is displayed:



3. From the Select Target Appliance drop down menu, select the appliance to which the image will be imported.
4. Click **Import** and the import operation will begin. A message will be displayed when the operation completes.

