

## Actifio CDS/Sky Tech Brief

# Configuring Generic Amazon AWS S3 Compatible Storage and Actifio OnVault for Long-Term Data Retention

### Audience

The intended audience for this document is the user who is familiar with their Amazon AWS S3 compatible cloud vendor and who has a basic understanding of Actifio processes and procedures.

---

**Note:** Although the processes are similar, customers who have their own AWS account and want to retain data captured by an Actifio appliance directly into an S3 bucket associated with that account, should consult the **Configuring Amazon AWS and Actifio OnVault for Long-Term Data Retention** tech brief.

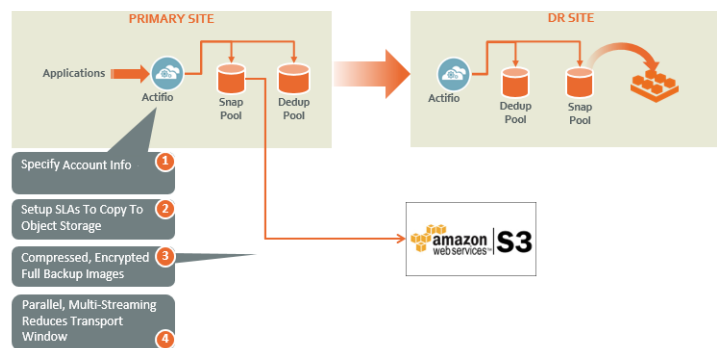
---

### Overview

Actifio appliances retain data in pools:

- Actifio Snapshot Pools provide short-term data retention i.e. a few days. Snapshot data ensures instant access to the latest production data.
- Actifio Dedup Pools provide medium-term data retention i.e. three to six months. Dedup data is incrementally rehydrated before it is accessed.

Actifio OnVault Pools and Actifio OnVault Policies allow a single Actifio appliance to send compressed, encrypted, full snapshots of application data to an Amazon AWS S3 bucket where data is retained for the long-term i.e. for months or years. Incremental copies of production data are not sent to OnVault Pools.



#### Four Steps to Put Application Data into Amazon S3

In addition to supporting S3 storage directly in an AWS account. Actifio OnVault Pools also support AWS S3 compatible storage from vendors other than AWS.

To define Amazon compatible S3 storage for an Actifio OnVault Pool you must have an account with an Amazon S3 compatible Cloud Object Storage vendor.

---

**Note:** *Actifio Storage Pools can be used with Amazon's S3 Standard Storage and Standard Infrequent Access Storage. Glacier Storage is not supported.*

---

## Before You Begin

Before begin, you must have a fully functional account from your AWS S3 compatible cloud vendor.

From your Amazon S3 Cloud Object Storage vendor you must obtain:

- A Private key for the Amazon S3 storage.
- The Access ID for the Amazon S3 storage.
- A bucket name for this Actifio OnVault Pool.
- The URL to your Cloud Object Storage.

Once you have obtained these, then you can:

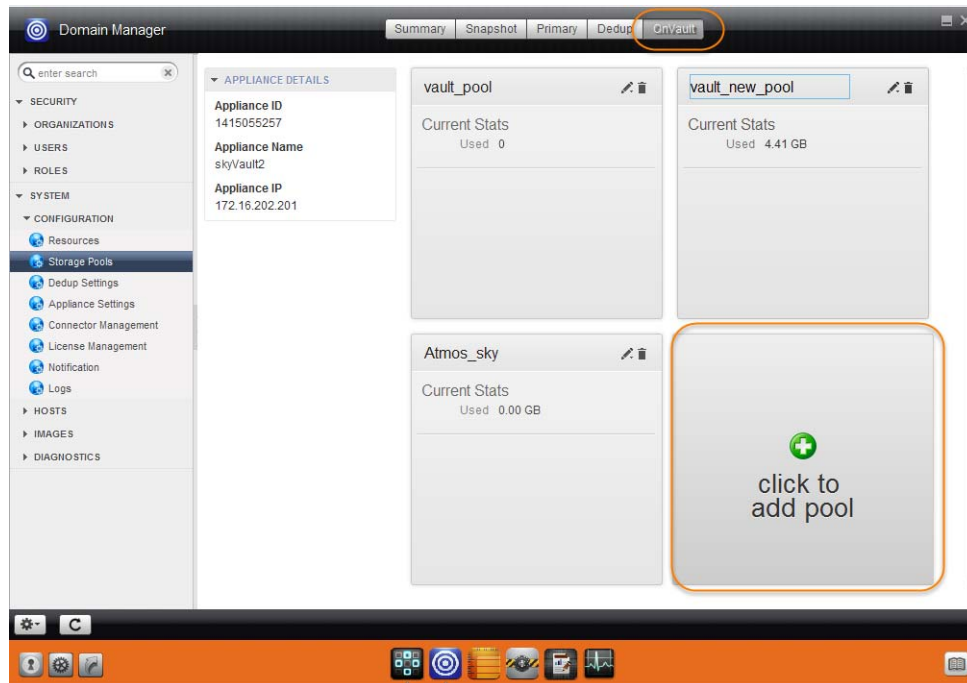
- [Add Actifio OnVault Pools](#) on page 3
- [Create Snapshot to OnVault Policy](#) on page 6
- [Access Data in an Actifio OnVault](#) on page 7

## Add Actifio OnVault Pools

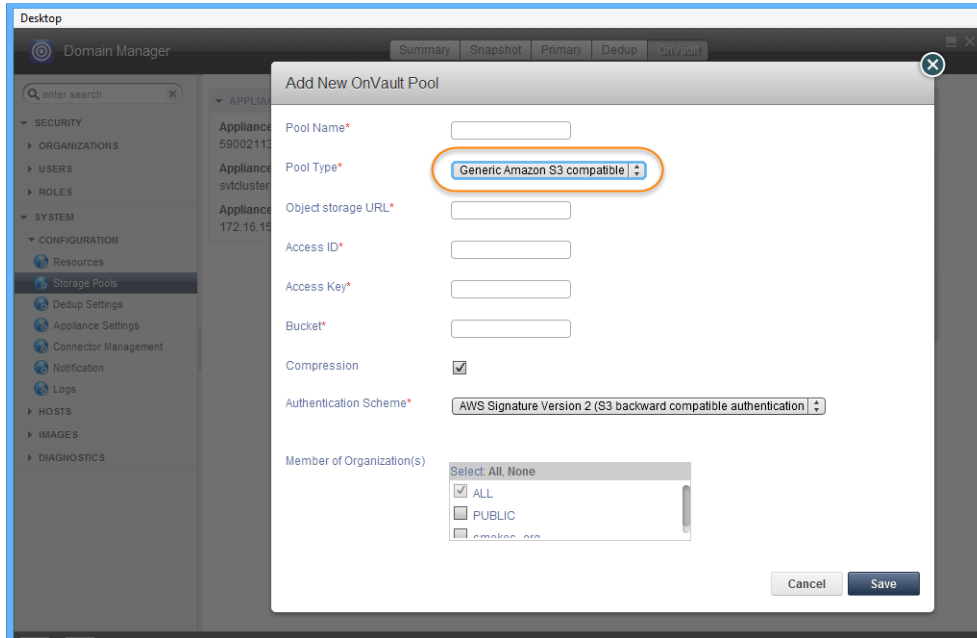
Actifio appliances store data in pools. Actifio OnVault Pools store copies of Production Snapshot data in Amazon S3 storage buckets.

To add an OnVault Pool to an Actifio appliance:

1. Open the **Domain Manager** to **System > Configuration > Storage Pools**.
2. Select the **Vault** tab and the Vault Pools page opens:



3. Click **Click to add pool** and a dialog box opens that will allow you to select Amazon S3 Storage.
4. Select **Amazon S3** and the OnVault Pool options for Amazon S3 Storage are displayed:



### Generic Amazon S3 Compatible Storage Settings

5. In the space provided enter a name for the OnVault Pool
6. From the drop down menu, select Generic Amazon S3 Compatible:
7. In the spaces provided enter:
  - o The URL to your Cloud Object Storage
  - o The Access ID for the Amazon S3 compatible storage
  - o The Access Key for the Amazon S3 compatible storage
  - o The name of the bucket name created for the Amazon S3 compatible storage
8. In most cases you will want to keep the compression option checked. Compression will keep network traffic to a minimum
9. Select the **AWS Signature Version** as needed.
10. Select the organization memberships for the OnVault pool as needed

## Create a Resource Profile

Resource profiles define in which Actifio pool application data is retained.

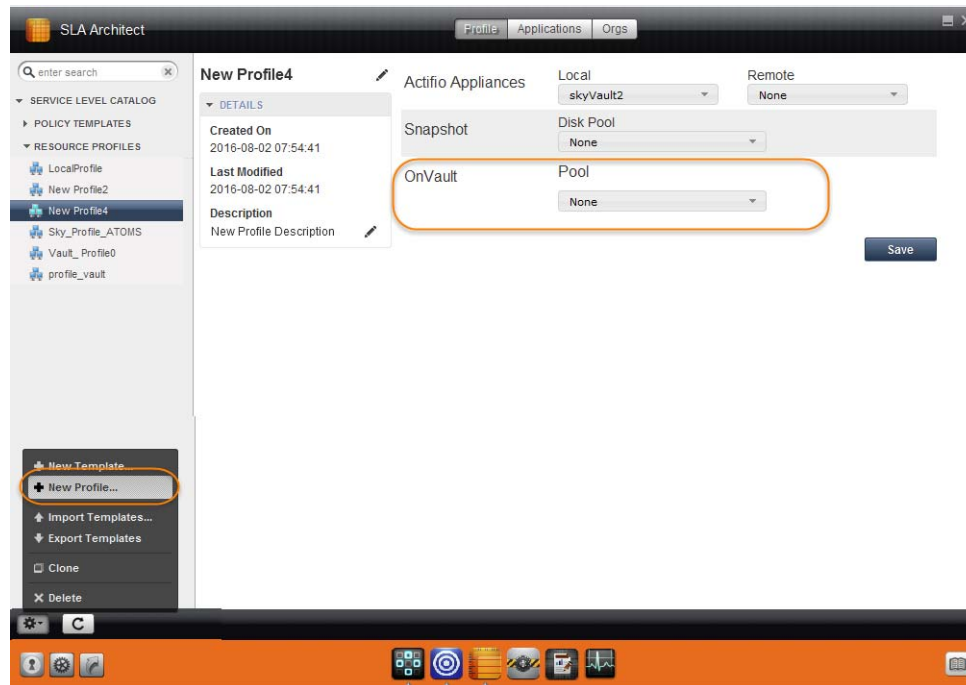
Resource Profiles are created in the Actifio Service Level Architect (SLA) service. To create a resource profile:

1. From the SLA Architect select either an existing policy template or from the SLA Architect's service menu, click **New Profile...** and the Resource Profile page is displayed.

---

**Caution!** If you select an existing Profile, ALL applications to which the Profile is applied will be impacted by changes to the Profile.

---



2. Select the local Actifio appliance from **Local** drop-down list. This is the appliance on which the profile is created.
3. Ensure a Snapshot Pool from the **Disk Pool** drop-down list is selected. Data written to this pool will be sent to the OnVault specified according to SLA Template Policy definitions.
4. From the **Vault Pool** drop down menu, select the Actifio OnVault Pool to which production data in the Snapshot Pool will be sent. You can select this option only if this Actifio appliance has defined an OnVault Storage Pool.
5. Click **Save**.

## Create Snapshot to OnVault Policy

The Snapshot to OnVault policy allows you to schedule when to send Production Snapshot data to an Actifio OnVault Pool.

To create a Production to OnVault Policy, you must either use an SLA Policy Template that already has a Production to Snapshot Policy defined or create a new SLA Policy Template.

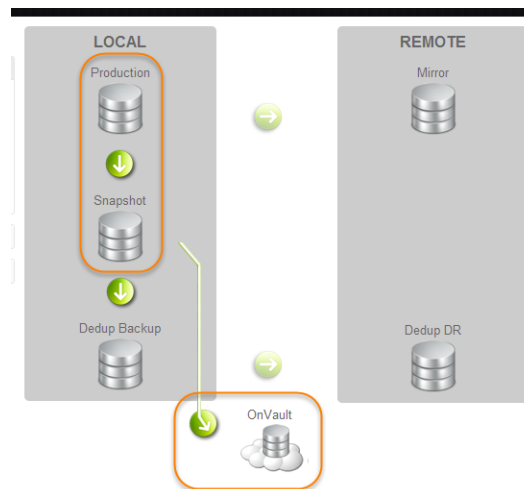
---

**Caution!** If you add a Snapshot to OnVault Policy to an existing SLA Policy Template, **ALL applications** to which the SLA Policy Template is applied will be impacted by the changes.

---

Best practices for creating SLA Policy Templates and Policies can be found in the **Developing Service Level Agreements** guide.

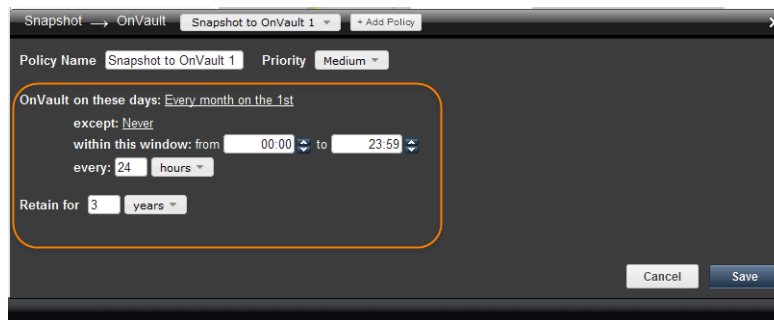
Individual policies within an SLA Policy Template are defined by clicking the green arrows on a new or existing SLA Policy Template:



When creating a Snapshot to OnVault policy to send the SLA Policy Template's most recent Production to Snapshot data to an Actifio OnVault Pool, set the frequency at which data is sent to no less than one week and make other settings as needed.

For example, to send Production to Snapshot data to a OnVault once a month, set:

- Vault on these days to **Every month on the 1st**
- The window to open and close as needed. Typically set to 19:00 to 18:50
- The frequency to **Every 24 Hours**
- Retain for **3 Years**



## Capture Application Data

Once you have both a Resource Profile that uses an OnVault Pool and an SLA Policy Template that contains an OnVault Policy, you can, via the Actifio Application Manager apply the Resource profile and SLA Policy Template to applications and VMs.

## Access Data in an Actifio OnVault

When accessing data in an Actifio OnVault Pool's AWS storage location:

- Actifio CDS and Sky appliances can create clones from OnVault data.
- Actifio Sky appliances can mount OnVault data.

---

**Note:** Mounted data can be accessed directly from a host, but it is not recommended to run workloads directly against this data.

---

- Actifio CDS appliances **cannot** mount data in an OnVault Pool
- LiveClones cannot be created from data in an OnVault Pool.
- Actifio Application Aware mounts are not supported for data in an OnVault Pool.

For details on how to access data captured by an Actifio appliance, see **Accessing and Recovering Copy Data with the Application Manager**.

