

## Actifio CDS/Sky Tech Brief

# Configuring Scality S3 Server and Actifio OnVault for Long-Term Data Retention

### Audience

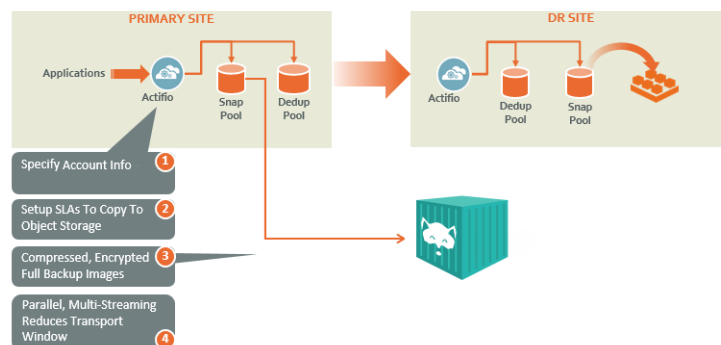
The intended audience for this document is the user who is familiar with their Scality S3 Server compatible storage and who has a basic understanding of Actifio processes and procedures.

### Overview

Actifio appliances retain data in pools:

- Actifio Snapshot Pools provide short-term data retention i.e. a few days. Snapshot data ensures instant access to the latest production data.
- Actifio Dedup Pools provide medium-term data retention i.e. three to six months. Dedup data is incrementally rehydrated before it is accessed.

Actifio OnVault Pools and Actifio OnVault Policies allow a single Actifio appliance to send compressed, full snapshots of application data to a Scality S3 Server bucket where data is retained for the long-term i.e. for months or years. Incremental copies of production data are not sent to OnVault Pools.



### Four Steps to Put Application Data into Scality S3 Server

## Before You Begin

This document assumes that you have a basic understanding of Scality S3 Server processes and procedures. From your Scality S3 Server, you will be required to obtain:

- A Scality S3 Server bucket name.
- A Private key (Secret Access Key) for access the bucket.
- The Access ID (Access Key ID) for the bucket.
- A PEM file if you require HTTPS connectivity to your Scality S3 object storage.
- The URL to the object storage.

Once you have obtained these, then you can:

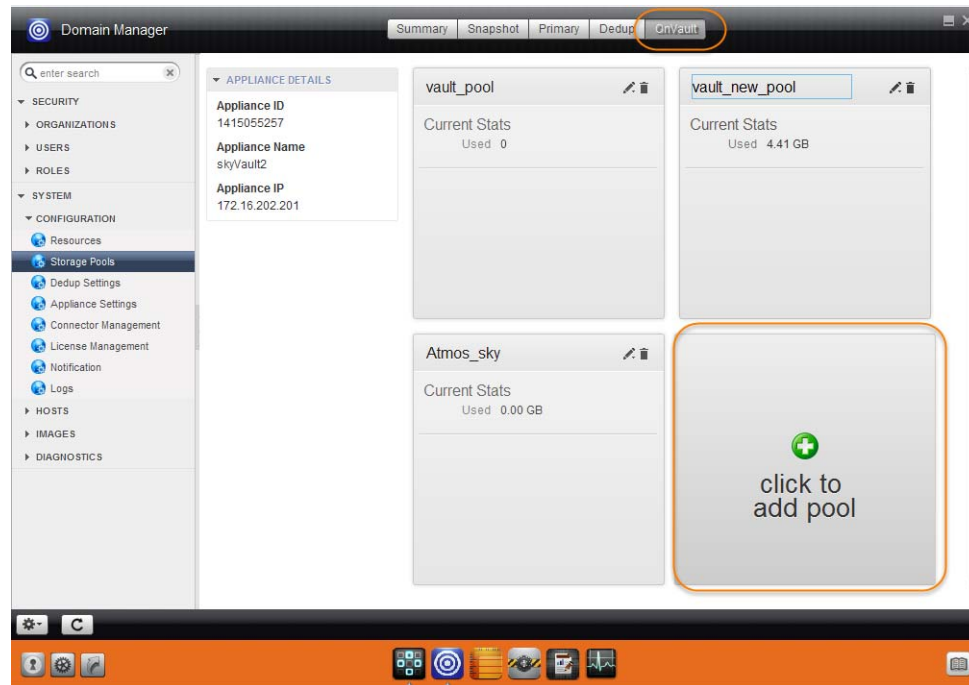
- [Add Actifio OnVault Pools](#) on page 3
- [Create Snapshot to OnVault Policy](#) on page 6
- [Access Data in an Actifio OnVault](#) on page 7

## Add Actifio OnVault Pools

Actifio appliances store data in pools. Actifio OnVault Pools store copies of Production Snapshot data in Scalify S3 Server object storage.

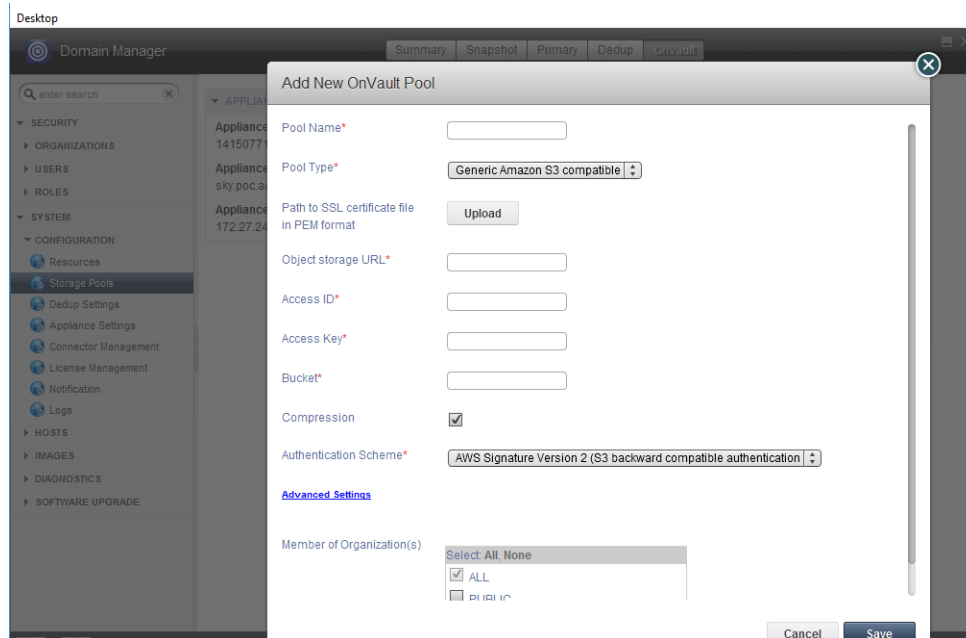
To add an OnVault Pool to an Actifio appliance:

1. Open the **Domain Manager** to **System > Configuration > Storage Pools**.
2. Select the **Vault** tab and the Vault Pools page opens:



### Vault Pools

3. Click **Click to add pool** and the Add New OnVault Pool dialog box opens.



### Generic Amazon S3 Compatible Storage Settings

4. In the space provided enter a **Pool Name** for the OnVault Pool.
5. From the **Pool Type** drop down menu, select **Generic Amazon S3 Compatible**:
6. If you want to use an HTTPS connection to your Scality S3object storage, click **Upload** to upload the SSL Certificate (PEM format) file for your Scality S3 object storage.
7. In the spaces provided enter:
  - o The Scality S3 Server bucket name.
  - o The Private key (Secret Access Key) for access the bucket.
  - o The Access ID (Access Key ID) for the bucket.
  - o The URL to the object storage.
8. In most cases you will want to keep the compression option checked. Compression will keep network traffic to a minimum
9. **Advanced Settings** should only be changed from the default 64KB block size at the direction of Actifio Support.
10. Select the **AWS Signature Version** as needed.
11. Select the organization memberships for the OnVault pool as needed

## Create a Resource Profile

Resource profiles define in which Actifio pool application data is retained.

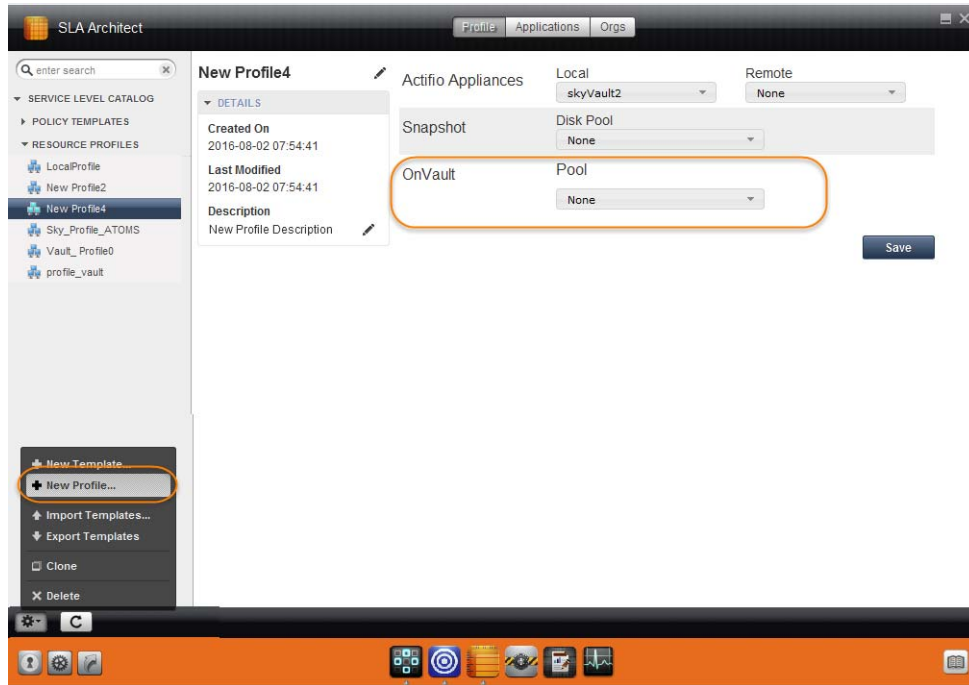
Resource Profiles are created in the Actifio Service Level Architect (SLA) service. To create a resource profile:

1. From the SLA Architect select either an existing policy template or from the SLA Architect's service menu, click **New Profile...** and the Resource Profile page is displayed.

---

**Caution!** If you select an existing Profile, ALL applications to which the Profile is applied will be impacted by changes to the Profile.

---



2. Select the local Actifio appliance from **Local** drop-down list. This is the appliance on which the profile is created.
3. Ensure a Snapshot Pool from the **Disk Pool** drop-down list is selected. Data written to this pool will be sent to the OnVault specified according to SLA Template Policy definitions.
4. From the **Vault Pool** drop down menu, select the Actifio OnVault Pool to which production data in the Snapshot Pool will be sent. You can select this option only if this Actifio appliance has defined an OnVault Storage Pool.
5. Click **Save**.

## Create Snapshot to OnVault Policy

The Snapshot to OnVault policy allows you to schedule when to send Production Snapshot data to an Actifio OnVault Pool.

To create a Production to OnVault Policy, you must either use an SLA Policy Template that already has a Production to Snapshot Policy defined or create a new SLA Policy Template.

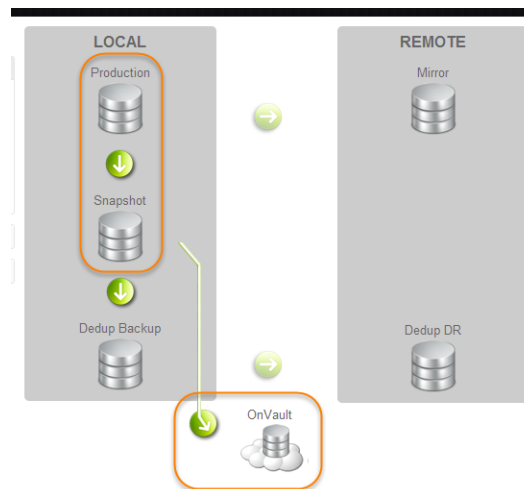
---

**Caution!** If you add a Snapshot to OnVault Policy to an existing SLA Policy Template, **ALL applications** to which the SLA Policy Template is applied will be impacted by the changes.

---

Best practices for creating SLA Policy Templates and Policies can be found in the **Developing Service Level Agreements** guide.

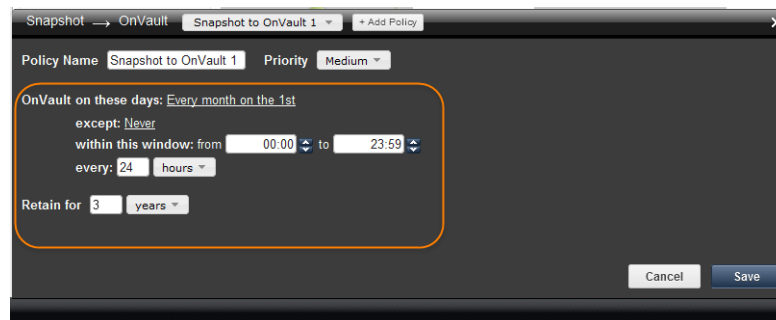
Individual policies within an SLA Policy Template are defined by clicking the green arrows on a new or existing SLA Policy Template:



When creating a Snapshot to OnVault policy to send the SLA Policy Template's most recent Production to Snapshot data to an Actifio OnVault Pool, set the frequency at which data is sent to no less than one week and make other settings as needed.

For example, to send Production to Snapshot data to a OnVault once a month, set:

- Vault on these days to **Every month on the 1st**
- The window to open and close as needed. Typically set to 19:00 to 18:50
- The frequency to **Every 24 Hours**
- Retain for **3 Years**



## Capture Application Data

Once you have both a Resource Profile that uses an OnVault Pool and an SLA Policy Template that contains an OnVault Policy, you can, via the Actifio Application Manager apply the Resource profile and SLA Policy Template to applications and VMs.

## Access Data in an Actifio OnVault

When accessing data in an Actifio OnVault Pool's object storage:

- Actifio CDS and Sky appliances can create clones from OnVault data.
- Actifio Sky appliances can mount OnVault data.

---

**Note:** Mounted data can be accessed directly from a host, but it is not recommended to run workloads directly against this data.

---

- Actifio CDS appliances **cannot** mount data in an OnVault Pool
- LiveClones cannot be created from data in an OnVault Pool.
- Actifio Application Aware mounts are not supported for data in an OnVault Pool.

For details on how to access data captured by an Actifio appliance, see **Accessing and Recovering Copy Data with the Application Manager**.

