
Deploying Actifio Sky from the AWS Marketplace

Copyright, Trademarks, and other Legal Matter

Copyright © 2009 - 2019 Actifio, Inc. All rights reserved.

Actifio®, AnyIT®, Dedup Async®, OnVault®, Enterprise Data-as-a-Service®, FlashScan®, AppFlash DEVOPS Platform®, Copy Data Cloud®, and VDP® are registered trademarks of Actifio, Inc.

Actifio Sky™, Actifio One™, and Virtual Data Pipeline™ are trademarks of Actifio, Inc.

All other brands, product names, goods and/or services mentioned herein are trademarks or property of their respective owners.

Actifio, Inc., is a provider of data protection and availability products. Actifio's technology is used in products sold by the company and products and services sold and offered by its commercial partners. The current list of Actifio patents is available online at: <http://www.actifio.com/patents/>

Actifio believes the information in this publication is accurate as of its publication date. Actifio reserves the right to make changes to information published in this document, including without limitation specifications and product descriptions, at any time and without notice. This document supersedes and replaces all information supplied prior to the publication hereof.

THE INFORMATION IN THIS PUBLICATION IS PROVIDED "AS IS." ACTIFIO, INC. MAKES NO REPRESENTATIONS OR WARRANTIES OF ANY KIND WITH RESPECT TO THE INFORMATION IN THIS PUBLICATION, AND SPECIFICALLY DISCLAIMS IMPLIED WARRANTIES OF MERCHANTABILITY OR FITNESS FOR A PARTICULAR PURPOSE.

This software and the associated documentation are proprietary and confidential to Actifio. Use, copying, and distribution of any Actifio software described in this publication requires an applicable software license. Any unauthorized use or reproduction of this software and the documentation may be subject to civil and/or criminal liability.

Actifio strives to produce quality documentation and welcomes your feedback. Please send comments and suggestions to docs@actifio.com.

Published October 4, 2019

Contents

| | |
|--|-----------|
| Preface | v |
| The ActifioNOW Customer Portal..... | v |
| Chapter 1 - Introduction | 1 |
| Chapter 2 - Deploying Actifio Sky from the AWS Marketplace | 3 |
| Subscribe to an Actifio Sky Appliance Instance from the Marketplace..... | 3 |
| Launching Actifio Sky for AWS from the Marketplace..... | 7 |
| Chapter 3 - Upgrading Sky Appliance | 11 |
| Obtain the Upgrade File..... | 11 |
| Upgrade the Sky Appliance..... | 11 |
| Next Steps..... | 12 |

Preface

The information in this guide is intended for users who are configuring Actifio Sky for AWS.

After you have configured Actifio Sky for AWS, add the appliance to an AGM and manage the appliance from there. Consult ***Getting Started with Actifio Copy Data Management***. It provides detailed instructions on using the unique features of Actifio Sky for AWS. A copy of this guide can be found in the ActifioNOW customer portal.

The following guide will be of particular interest:

- Deploying Actifio Global Manager in AWS

The ActifioNOW Customer Portal

From the customer portal you can obtain detailed reports about your appliance, as well as search the portal's knowledge base for answers to specific questions.

To log into the ActifioNOW customer portal:

1. Go to: <https://now.actifio.com>
2. When prompted, enter the user name and password you received after registering for Actifio Sky for AWS.

1 Introduction

Actifio Sky for AWS brings enterprise-class access, agility, and control to data in the Amazon cloud. Actifio Sky for AWS appliances are based on the Actifio's Sky virtual appliance. An Actifio Sky for AWS appliance is a virtual server designed to capture and manage data that resides on the servers in an AWS VPC.

Multiple Actifio Sky for AWS appliances can be deployed and configured. Each Actifio Sky for AWS appliance can capture local application data and replicate copies of the data to other Actifio Sky for AWS appliances.

Actifio Sky appliances outside of AWS can replicate data to Actifio Sky appliances in AWS. Actifio provides the following Actifio Sky for AWS solution:

Actifio Sky for AWS: Deployed in VPC(s) that host application data. Data is captured, stored, and if present, can be replicated to an Actifio Sky for AWS Target on a remote VPC.

After you have completed deploying Actifio Sky for AWS, continue to adding the Sky appliance to an AGM. After you have added the appliance, you can manage the appliance from AGM.

2 Deploying Actifio Sky from the AWS Marketplace

Use the instructions in this chapter to subscribe to a Sky instance and then launch the Sky appliance from the Amazon marketplace.

Note: If you have multiple VPCs, configure your Actifio Sky for AWS appliance in the VPC that contains most of the applications to be protected. Applications that reside outside of the specified VPC can be protected if you provide a peering connection between VPCs via AWS.

This chapter has the following topics:

[Subscribe to an Actifio Sky Appliance Instance from the Marketplace](#) on page 3

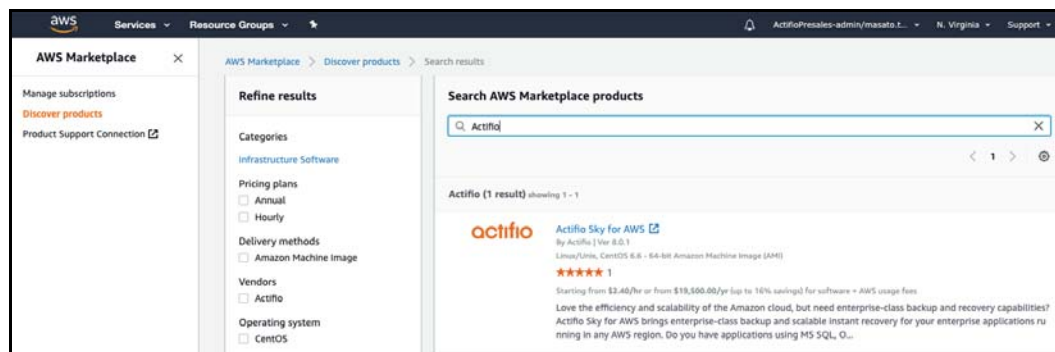
[Launching Actifio Sky for AWS from the Marketplace](#) on page 7

Subscribe to an Actifio Sky Appliance Instance from the Marketplace

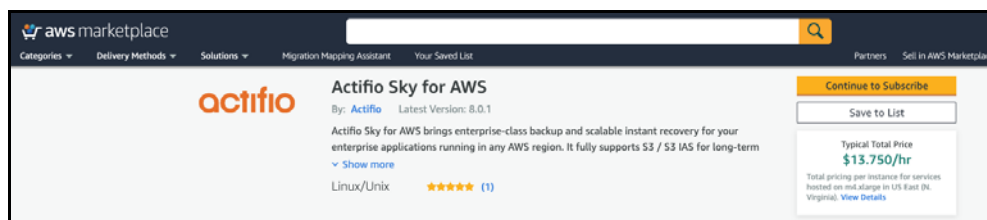
Before you begin, login to the Amazon marketplace.

To subscribe to an Actifio Sky appliance instance:

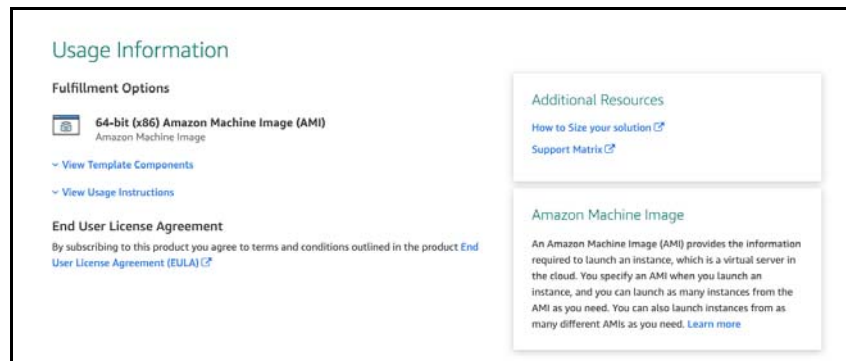
1. In the AWS Marketplace, click **Discover Products**.
2. In the search text box enter Actifio, then click **Search**. You will see the Actifio Sky for AWS product listed.



3. Select from the product to view the product details.
4. Review more information about Actifio's offering with Sky in AWS.



5. Determine the type (size) of instance to deploy. Actifio provides a Solution Calculator that, based on your data requirements, will recommend a specific instance type (size).
 - a. To use the Actifio Solution Calculator, go to **Additional Resources** section and click **How to Size your solution**.



The Actifio Solution Calculator page opens.

- b. Download the calculator and enter the information about your data requirements. The calculator will return one of the recommended instance types (sizes) based on the amount of data and whether the Actifio Sky appliance will use dedup policies:

| Deduplication Policies Used | |
|-----------------------------|---------------------|
| Instance Type | Actifio Sky License |
| m3.xlarge | 5 TB |
| c4.2xlarge | 10 TB |
| r3.4xlarge | 30 TB |

| Deduplication Policies NOT Used | |
|------------------------------------|---------------------|
| Instance Type | Actifio Sky License |
| M4.XLarge M4.2XLarge Encryption | 60 TB |
| M4.2XLarge | 120 TB |
| M4.4XLarge | 200 TB |

Note: These sizes are the minimum sizes required based on your Actifio Solution Calculator entries. You may use a larger size instance type as you see fit.

- c. Record the recommended size, you will need it when configuring the Actifio appliance.
 - d. Close the sizing page to go back to the product page.

6. Next, click **Continue to Subscription**. You will see the subscription options.

actifio Actifio Sky for AWS

Continue to Configuration
You must first review and accept terms.

< Product Detail **Subscribe**

Subscribe to this software

To create a subscription, review the pricing information, and accept the terms for this software. You can also create a long term contract on this page.

Terms and Conditions

Actifio Offer

By subscribing to this software, you agree to the pricing terms and the seller's end user license agreement (EULA). Your use of AWS services is subject to the [AWS Customer Agreement](#).

Accept Terms

The following table shows pricing information for the listed software components. You're charged separately for your use of each component.

| EC2 Instance Type | Software/hr | Software/yr | Savings |
|-------------------|-------------|--------------|---------|
| t2.xlarge | \$7.13 | \$52,650.00 | 16% |
| m4.large | \$2.40 | \$19,500.00 | 7% |
| m4.xlarge | \$13.55 | \$100,035.00 | 16% |
| m4.2xlarge | \$24.45 | \$190,067.00 | 11% |
| r3.4xlarge | \$30.42 | \$232,319.00 | 13% |

[End User License Agreement](#)

7. Click **Accept terms** and then select the instance type.

actifio Actifio Sky for AWS

Continue to Configuration

Thank you for subscribing to this product! You can now configure your software.

< Product Detail **Subscribe**

Subscribe to this software

You're subscribed to this software. Please see the terms and pricing details below or click the button above to configure your software.

Save money by purchasing a software contract

You can save on the cost of this software by purchasing a software contract. You will be charged the full fee when you confirm the contract purchase. The charge only covers the software cost over the contract duration.

[Configure contract](#)

Software contract

Select contract option(s)

Total contract price \$0
Due now

[Configure Contract](#)

Terms and Conditions

Actifio Offer

You have subscribed to this software and agree that your use of this software is subject to the pricing terms and the seller's End User License Agreement (EULA). Your use of AWS services is subject to the [AWS Customer Agreement](#).

| Product | Effective date | Expiration date | Action |
|---------------------|----------------|-----------------|------------------------------|
| Actifio Sky for AWS | 10/1/2019 | N/A | Show Details |

8. Next, accept the terms of the subscription and click **Continue to Configuration**.
9. Select the Fulfillment option and then select the Sky version and region to install the instance:
- o **Fulfillment Option** - 64 bit (x86) Amazon machine Image (AMI)
 - o **Software Version** - Always select the latest version.
 - o **Region** - Select the region you want the Sky instance in.

Actifio Sky for AWS

Continue to Launch

[Product Detail](#)
[Subscribe](#)
[Configure](#)

Configure this software

Choose a fulfillment option below to select how you wish to deploy the software, then enter the information required to configure the deployment.

Fulfillment Option

64-bit (x86) Amazon Machine Image (AMI)

Software Version

8.0.1 (Apr 11, 2018)

Region

US East (N. Virginia)

AMI ID: ami-79da3208

Save money by purchasing a software contract

You can save on the cost of this software by purchasing a software contract. You will be charged the full fee when you confirm the contract purchase. The charge only covers the software cost over the contract duration.

[Configure contract](#)

Software contract

Select contract option(s)

Total contract price \$0

Due now

Create Contract

Pricing information

This is an estimate of typical software and infrastructure costs based on your configuration. Your actual charges for each statement period may differ from this estimate.

Software Pricing

Actifio Sky for AWS

running on m4.xlarge

\$13.55/hr OR \$100,035.00/yr

Infrastructure Pricing

EC2:

1 * m4.xlarge

Monthly Estimate: \$144.00/month

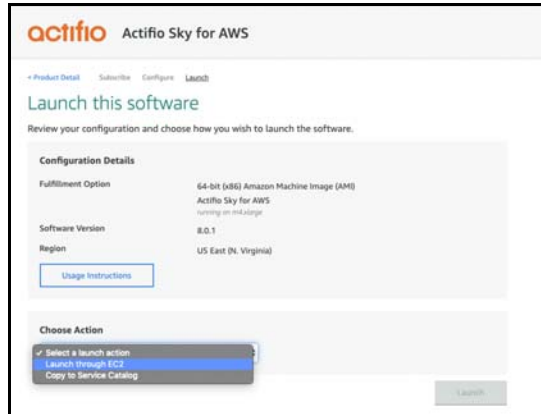
- Click **Continue to Launch**. The Launch this software page opens. Continue to [Launching Actifio Sky for AWS from the Marketplace](#) on page 7.

Launching Actifio Sky for AWS from the Marketplace

To launch Actifio Sky for AWS:

1. In the Launch this software page, select **Launch through EC2** from the Choose Action drop-down.

Note: The connection methods and port ranges are listed under the Launch with EC2 Console option. You will have the opportunity to adjust those settings during the configuration process.



2. Click **Launch** to open the launch console for the region in which the Actifio Sky appliance will be installed. The Step 2: Choose an Instance Type page opens. The requirements for Step 1 were satisfied when you subscribed to the Actifio product in [Subscribe to an Actifio Sky Appliance Instance from the Marketplace](#) on page 3.
3. Select the Instance type to be used with the Actifio Sky appliance.

1. Choose AMI 2. Choose Instance Type 3. Configure Instance 4. Add Storage 5. Add Tags 6. Configure Security Group 7. Review

Step 2: Choose an Instance Type

Amazon EC2 provides a wide selection of instance types optimized to fit different use cases. Instances are virtual servers that can run applications. They have varying combinations of CPU, memory, storage, and networking capacity, and give you the flexibility to choose the appropriate mix of resources for your applications. [Learn more](#) about instance types and how they can meet your computing needs.

Filter by: All instance types Current generation Show/Hide Columns

Currently selected: t2.xlarge (Variable ECUs, 4 vCPUs, 32 GB memory, EBS only)

| | Family | Type | vCPUs | Memory (GB) | Instance Storage (GB) | EBS-Optimized Available | Network Performance | IPv6 Support |
|---|-----------------|-------------|-------|-------------|-----------------------|-------------------------|---------------------|--------------|
| Ⓢ | General purpose | t2.nano | 1 | 0.5 | EBS only | - | Low to Moderate | Yes |
| Ⓢ | General purpose | t2.micro | 1 | 1 | EBS only | - | Low to Moderate | Yes |
| Ⓢ | General purpose | t2.small | 1 | 2 | EBS only | - | Low to Moderate | Yes |
| Ⓢ | General purpose | t2.medium | 2 | 4 | EBS only | - | Low to Moderate | Yes |
| Ⓢ | General purpose | t2.large | 2 | 8 | EBS only | - | Low to Moderate | Yes |
| Ⓢ | General purpose | t2.xlarge | 4 | 16 | EBS only | - | Moderate | Yes |
| Ⓢ | General purpose | t2.2xlarge | 8 | 32 | EBS only | - | Moderate | Yes |
| Ⓢ | General purpose | t3a.nano | 2 | 0.5 | EBS only | Yes | Up to 5 Gbps | Yes |
| Ⓢ | General purpose | t3a.micro | 2 | 1 | EBS only | Yes | Up to 5 Gbps | Yes |
| Ⓢ | General purpose | t3a.small | 2 | 2 | EBS only | Yes | Up to 5 Gbps | Yes |
| Ⓢ | General purpose | t3a.medium | 2 | 4 | EBS only | Yes | Up to 5 Gbps | Yes |
| Ⓢ | General purpose | t3a.large | 2 | 8 | EBS only | Yes | Up to 5 Gbps | Yes |
| Ⓢ | General purpose | t3a.xlarge | 4 | 16 | EBS only | Yes | Up to 5 Gbps | Yes |
| Ⓢ | General purpose | t3a.2xlarge | 8 | 32 | EBS only | Yes | Up to 5 Gbps | Yes |
| Ⓢ | General purpose | t3.nano | 2 | 0.5 | EBS only | Yes | Up to 5 Gbps | Yes |
| Ⓢ | General purpose | t3.micro | 2 | 1 | EBS only | Yes | Up to 5 Gbps | Yes |
| Ⓢ | General purpose | t3.small | 2 | 2 | EBS only | Yes | Up to 5 Gbps | Yes |
| Ⓢ | General purpose | t3.medium | 2 | 4 | EBS only | Yes | Up to 5 Gbps | Yes |
| Ⓢ | General purpose | t3.large | 2 | 8 | EBS only | Yes | Up to 5 Gbps | Yes |
| Ⓢ | General purpose | t3.xlarge | 4 | 16 | EBS only | Yes | Up to 5 Gbps | Yes |
| Ⓢ | General purpose | t3.2xlarge | 8 | 32 | EBS only | Yes | Up to 5 Gbps | Yes |

Cancel Previous Review and Launch Next: Configure Instance Details

The size to be used was determined by the Actifio Solution Calculator. These sizes are the minimum sizes required based on your Actifio Solution Calculator entries. You may use a larger instance as you see fit.

4. Click **Next: Configure Instance Details** and the Step 3: Configure Instance Details page opens.

5. Enter the configuration data:
 - o **Network:** From the drop down list, select the VPC (network) for the Actifio Sky instance.
 - o **Subnet:** From the drop-down list, select the subnet for the Actifio Sky instance.
 - o **Auto-assign Public IP:** From the drop down list, select **Enable** if this Actifio Sky instance requires access via the public Internet. This is not required if your IT infrastructure has a VPN.
6. Click **Next: Add Storage** and the Step 4 Add Storage page opens.

7. You will need four provisioned disks for the installation process:
 - o 100GB (minimum) for the Actifio Snapshot Pool.
 - o 400GB disk for the Primary Pool.
 - o 1024GB (minimum) for the Actifio Dedup Pool. Actifio Sky appliances that will not use dedup policies must have a Dedup Pool with a minimum size of 1024GB.
 - o An SSD with a minimum of 5000 IOPS based on the size of your MDL:

Note: The SSD will be added to the Actifio appliance via the Actifio Domain Manager. See [Adding an SSD to an Actifio Sky Appliance](#) on page 29 for details.

| License | SSD Size | Optional/Required |
|---------|----------|-------------------|
| 50TB | 512GB | Required |
| 30TB | 308GB | Required |
| 10TB | 103GB | Optional |
| 5TB | 53GB | Optional |
| 1TB | 1GB | Optional |

Actifio Sky appliances that will not use dedup policies do not need to use SSDs.

8. Click **Next: Tag Instance** and the Step 5 Tag Instance page opens.

1. Choose AMI 2. Choose Instance Type 3. Configure Instance 4. Add Storage 5. Add Tags 6. Configure Security Group 7. Review

Step 5: Add Tags

A tag consists of a case-sensitive key-value pair. For example, you could define a tag with key = Name and value = Webserver.
A copy of a tag can be applied to volumes, instances or both.
Tags will be applied to all instances and volumes. [Learn more](#) about tagging your Amazon EC2 resources.

| Key (128 characters maximum) | Value (256 characters maximum) | Instances | Volumes |
|------------------------------|--------------------------------|-------------------------------------|-------------------------------------|
| | | <input checked="" type="checkbox"/> | <input checked="" type="checkbox"/> |

Add another tag (Up to 50 tags maximum)

9. Create a tag for the Actifio Sky instance that is easy to remember and identify.
10. Click **Next: Configure Security Group** and the Step 6 Configure Security Group page opens.

1. Choose AMI 2. Choose Instance Type 3. Configure Instance 4. Add Storage 5. Add Tags 6. Configure Security Group 7. Review

Step 6: Configure Security Group

A security group is a set of firewall rules that control the traffic for your instance. On this page, you can add rules to allow specific traffic to reach your instance. For example, if you want to set up a web server and allow Internet traffic to reach your instance, add rules that allow unrestricted access to the HTTP and HTTPS ports. You can create a new security group or select from an existing one below. [Learn more](#) about Amazon EC2 security groups.

Assign a security group: ☒ Create a new security group ☐ Select an existing security group

Security group name:

Description: This security group was generated by AWS Marketplace and is based on recommendations.

| Type | Protocol | Port Range | Source | Description |
|-----------------|----------|------------|------------------|----------------------------|
| SSH | TCP | 22 | Custom 0.0.0.0/0 | e.g. SSH for Admin Desktop |
| HTTP | TCP | 80 | Custom 0.0.0.0/0 | e.g. SSH for Admin Desktop |
| HTTPS | TCP | 443 | Custom 0.0.0.0/0 | e.g. SSH for Admin Desktop |
| Custom TCP Rule | TCP | 5103 | Custom 0.0.0.0/0 | e.g. SSH for Admin Desktop |
| Custom TCP Rule | TCP | 3260 | Custom 0.0.0.0/0 | e.g. SSH for Admin Desktop |
| Custom TCP Rule | TCP | 3269 | Custom 0.0.0.0/0 | e.g. SSH for Admin Desktop |

Add Rule

11. Ensure that the Security Group is set as follows:

| Type | Protocol | Port Range | Source | Custom TCP Rule |
|-----------------|----------|------------|----------|-----------------|
| SSH | TCP | 22 | Anywhere | 0.0.0/0 |
| HTTPS | TCP | 443 | Anywhere | 0.0.0/0 |
| HTTP | TCP | 80 | Anywhere | 0.0.0/0 |
| Custom TCP Rule | TCP | 5103 | Anywhere | 0.0.0/0 |
| Custom TCP Rule | TCP | 3260 | Anywhere | 0.0.0/0 |
| Custom TCP Rule | TCP | 3269 | Anywhere | 0.0.0/0 |

12. Click **Review and Launch** and a page opens detailing your selections and settings.
13. If the selections and settings are correct, click **Launch** and the Actifio Sky appliance is deployed.
14. Continue on to [Chapter 3, Upgrading Sky Appliance](#).

3 Upgrading Sky Appliance

Use the instructions in this chapter to upgrade the Sky appliance you have launched (using instructions in [Launching Actifio Sky for AWS from the Marketplace](#) on page 7) to the latest recommended software version.

It has the following sections:

[Obtain the Upgrade File](#) on page 11

[Upgrade the Sky Appliance](#) on page 11

Obtain the Upgrade File

Your customer support representative will provide you with the latest `patch-SKY-actifioversion.gpg` upgrade file. Place a copy of that file in a location that is easily accessible from your browser.

Upgrade the Sky Appliance

To upgrade the Sky appliance:

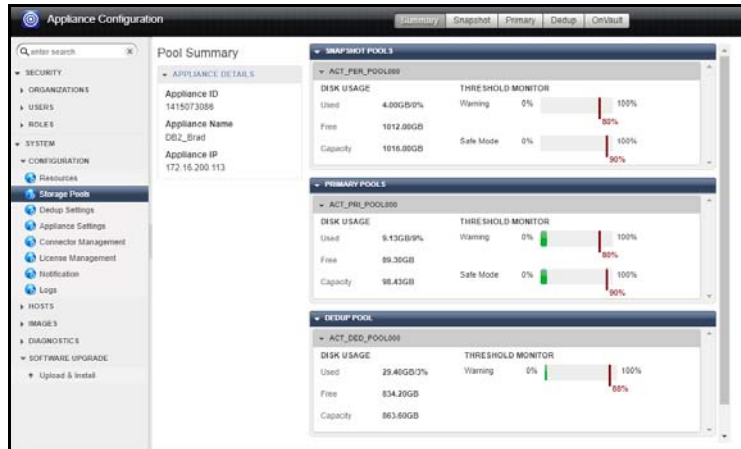
1. Open a browser and in the address space enter the Public IP address of the appliance:

`https://<Public IP of the Sky>/appliancesetup`

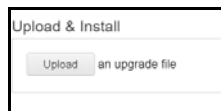
The Actifio Desktop login page opens.



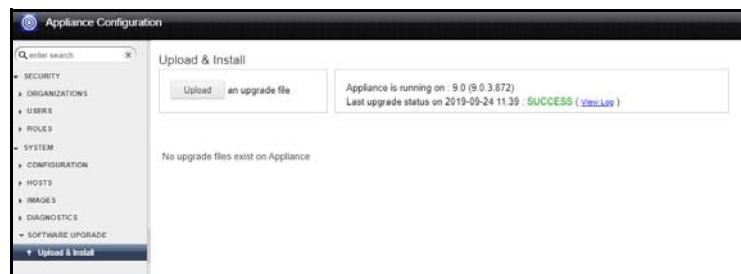
2. Enter the login credentials:
 - o For **Username**, enter `admin`
 - o For **Password**, use the Instance ID. Like the Public IP, you can find the Instance ID in the EC2 instance's Description tab.
3. Click **Sign in** and the Actifio Dashboard opens. The Dashboard shows a high-level view of your appliance's status.



4. In the left panel, expand Software Upgrade option and click **Upload and Install**.
5. Click **Upload** to upload the upgrade file, see [Obtain the Upgrade File](#) on page 11 for more information.



6. Follow the prompts to install the upload.
- Once upgrade is complete, you will see the success message:



Next Steps

Continue to adding the Sky appliance to an AGM using instructions in the topic “Adding an Appliance to AGM” using instructions in the AGM Online Help (you can access the Online Help from with your AGM). After you have added the appliance, you can manage the appliance from AGM.